

**Plans and drawings relevant to reports submitted to
Eastern Area Planning Committee
12 April 2017 at 6.30pm

at the Calcot Centre, Highview (off Royal Avenue),
Calcot**

[to be read in conjunction with the main agenda]

Please note:

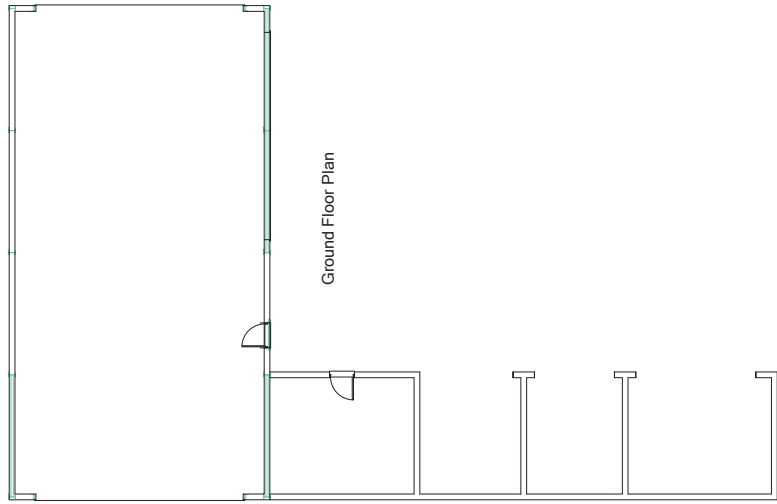
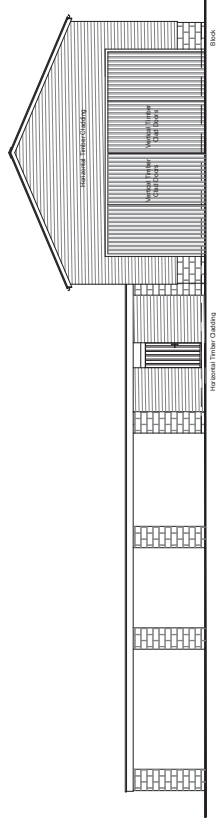
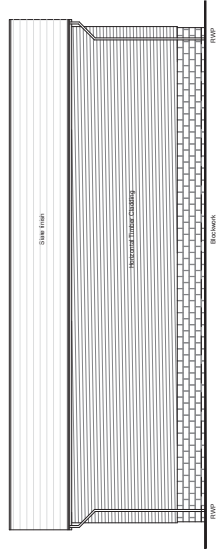
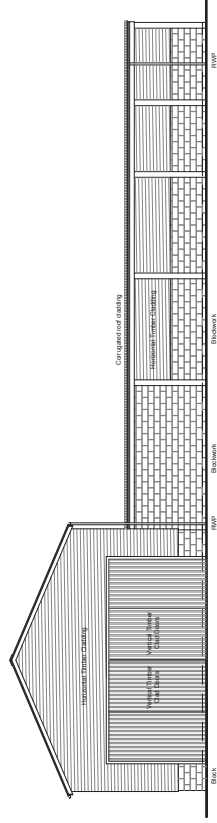
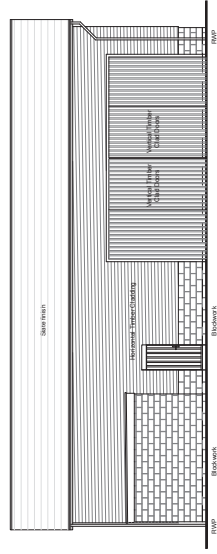
- *All drawings are copied at A4 and consequently are not scalable*
- *Most relevant plans have been included – however, in some cases, it may be necessary for the case officer to make a selection*
- *All drawings are available to view at www.westberks.gov.uk*
- *The application files will be available for half an hour before the meeting*

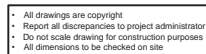
17/00351/FULD

Barn South Of Butlers Farm

Back Lane

Beenham





Client
Mrs T Palmer

101 Victoria Road, Swindon, Wiltshire SN1 3BD.
Tel/Fax 01793 612663 - E-mail:- ian.sullivan@btconnect.com

Date
10 / 2016

