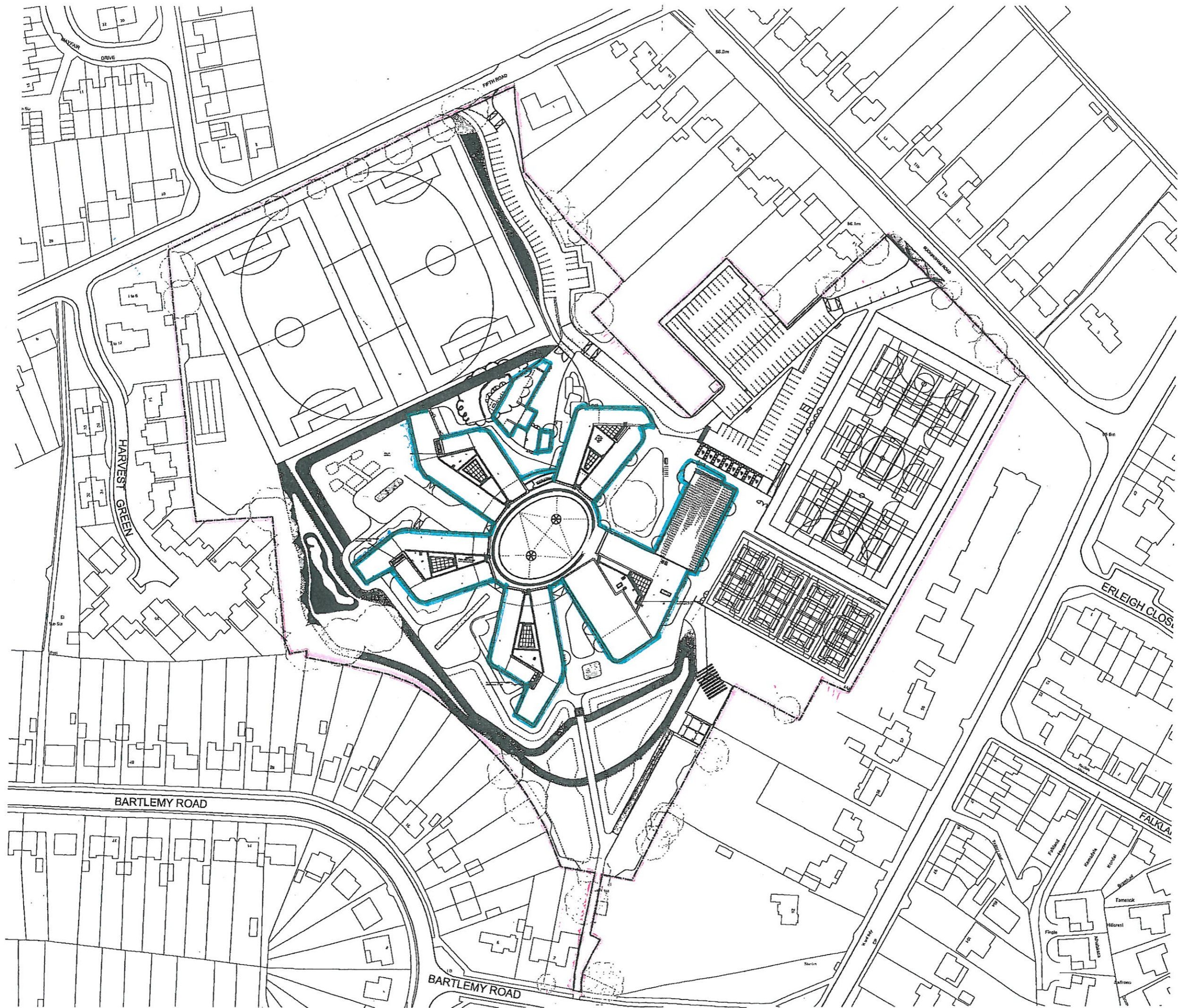


NOTE:
This drawing is indicative for landscaping layout please
refer to EDP drawings.



02	Issued for Phase 2 & 4 Tenders	AL	18Mar08	JG
01	Plan updated and issued for construction	AL	08Apr08	JG

**SCOTT
BROWNRIGG**

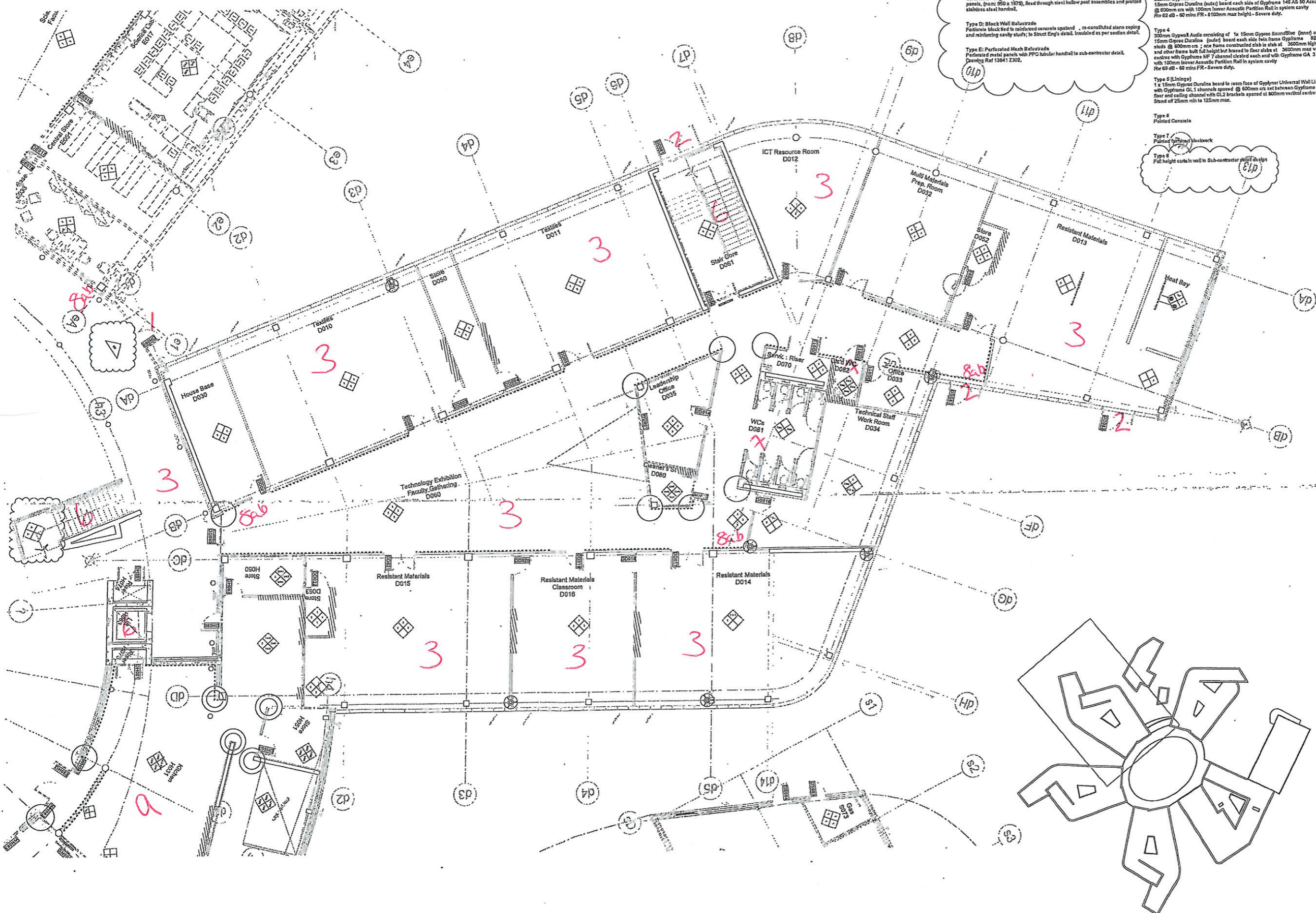
St Catherine's Court
4th-6th Portsmouth Road
Chichester GU2 4DU
T +44 (0)1243 856200
F +44 (0)1243 816220
W scottbrownrigg.com

Architect
Willmott Dixon

Client
St Bartholomew's School

Drawing title
Overall site plan

Scale	1 : 500 @ A0		
Drawn	AL	Checked	JG
Date	13641	Issue No	SBR 13641 X 113
Issue	TENDER	Date	12Mar08



Key to Balustrade Types: Ref drawing 13641 Z16 & Z22
 (All Balustrade types to be raised in accordance with current and relevant BS:Codes)

Type A: Mesh Panel Balustrade
 Flat mesh panels with PPG steel post assemblies and profiled handrails. Colour: TBC. Modular panels, (nom-950 x 1150).

Type B: Concrete Wall Balustrade
 1100 high reinforced concrete upstand to 6.E detail. Painted finish, Colour TBC.

Type C: Glass Panel Balustrade
 Clear laminated glass 'top-down' balustrade panels, with s/s patch fixings; Modular panels, (nom: 950 x 1170), fixed through steel hollow post assemblies and profiled stainless steel handrails.

Type D: Block Wall Balustrade
 Portland block tied to reinforced concrete upstand, re-constructed stone coping and reinforcing cavity studs; to Sauter Eng's detail. Insulated as per section detail.

Type E: Perforated Mesh Balustrade
 Perforated metal panels with PPG tubular handrail to sub-contractor detail. Drawing Ref 13641 Z302.

Key to Wall Types

Type 1
 102mm Gyproc ROBUST consisting of 1 x 15mm Gyproc Duraline board each side of Gyproc 70 S 60 studs @ 600mm c/s with 50mm Isover Acoustic Partition Roll in system cavity.
 Rev 01/05 - 60 mins FR - 4000mm max height - Severe duty.

Type 2
 102mm Gyproc ROBUST consisting of 1 x 15mm Gyproc Duraline board each side of Gyproc 70 S 60 studs @ 600mm c/s with 75mm Isover Acoustic Partition Roll in system cavity.
 Rev 01/05 - 60 mins FR - 4000mm max height - Severe duty.

Type 3
 200mm Gyproc Classic consisting of 1x 15mm Gyproc SoundBloc (fibre) and 1x 15mm Gyproc Duraline (outer) board each side 400mm Gyproc 52 S 10 studs @ 600mm c/s; one frame constructed slab in slab at 3000mm high max and other frame built full height but braced to floor slabs at 3000mm max vertical centres with Gyproc MF 7 channel cleated each end with Gyproc GA 3 angle with 100mm Isover Acoustic Partition Roll in system cavity.
 Rev 02/05 - 60 mins FR - 4000mm max height - Severe duty.

Type 4
 200mm Gyproc Audio consisting of 1x 15mm Gyproc SoundBloc (fibre) and 1x 15mm Gyproc Duraline (outer) board each side 400mm Gyproc 52 S 10 studs @ 600mm c/s; one frame constructed slab in slab at 3000mm high max and other frame built full height but braced to floor slabs at 3000mm max vertical centres with Gyproc MF 7 channel cleated each end with Gyproc GA 3 angle with 100mm Isover Acoustic Partition Roll in system cavity.
 Rev 02/05 - 60 mins FR - 4000mm max height - Severe duty.

Type 5 (Lining)
 1 x 15mm Gyproc Duraline board to room face of Gypflor Universal Wall Lining with Gyproc GL 1 channels spaced @ 600mm c/s set between Gyproc GL 8 floor and ceiling channel with GL 2 brackets spaced at 900mm vertical centres. Sheet of 25mm min to 125mm max.

Type 6
 Painted Concrete

Type 7
 Painted perforated blockwork

Type 8
 Full height curtain wall to sub-contractor detail

© Scott Brownrigg Ltd

Figured dimensions only are to be taken from this drawing. All dimensions are to be checked on site before any work is put in hand.

General Notes:
 *JC denotes where plasterboard will be used on single side of gyproc frame.
 *MC denotes moisture resistant variant of outer board of respective face.
 Partition systems to include deflection heads to accommodate +/- 20mm, 15mm plywood facing grounds on Gyproc Service Support Plates, where required.

All exposed drying junctions to door sets to be protected by Gyproc edge bead.

Grades Armad 3.5mm(7) x 150mm(9) PVC-u Medium duty wall protection. Adhesive fixed @ 600mm CL FFL Colour TBC.

Grades Flex - Angle Corner Guard (2.1m). Adhesive fixed. Colour TBC

Area of wall to receive gyproc 99FC50 reinforcement Ref SBR-Z357 Detail 14+15 @ heights TBC

All columns to be painted concrete, all exposed concrete finishes to S/E specification

Area to receive 2x 12.5mm plasterboard boxing around pipe, pipe to be fixed with 25mm Isover wall Ref Drawing 13641 Z 323 & 13641 Z324

Internal Fix Walls - Legend

30 MINUTES FIRE RESISTANT CONSTRUCTION / ENCLOSURE

02	Update of Balustrade Type as instructed	CB	29Jul09	CP
01	Revised door and VP numbers, issued for construction.	CP	12May09	CB
Mark	Revision	Drawn	Date	Checked

SCOTT BROWNRIFF

St Catherine's Court
 46-48 Portsmouth Road
 Guildford GU2 4DU
 T +44 (0)1483 558585
 F +44 (0)1483 575830
 W scottbrownrigg.com

Client's name
 Willmott Dixon

Job title
 St Bartholomew's School

Drawing title
 Davis
 Ground Floor Plan
 Wall Types (D)

Scale
 1: 100 @ A1

metres 0 5 10
 Drawn mal Checked mal Date 15Apr08

Job No 13641 Drawing No SBR 13641 D 107 Rev 02

Status
 CONSTRUCTION



Key to Wall Types

Type 1
102mm Gyproc ROBUST consisting of 1 x 15mm Gyproc Durafine board each side of Gyproframe 70 S 62 studs @ 500mm c/c with 50mm Isover Acoustic Partition Roll in system cavity.
Rw 47dB - 60 mins FR - 4000mm max height - Severe duty.

Type 2
102mm Gyproc ROBUST consisting of 1 x 15mm Gyproc Durafine board each side of Gyproframe 70 S 62 studs @ 600mm c/c with 75mm Isover Acoustic Partition Roll in system cavity.
Rw 51dB - 60 mins FR - 4000mm max height - Severe duty.

Type 3
208mm Gyproc Classic consisting of 1x 15mm Gyproc SoundBloc (over) and 1x 15mm Gyproc Durafine (under) board each side of Gyproframe 145 AS 50 Acoustuds @ 600mm c/c with 100mm Isover Acoustic Partition Roll in system cavity.
Rw 62 dB - 60 mins FR - 8100mm max height - Severe duty.

Type 4
350mm Gyproc Audio consisting of 1x 15mm Gyproc SoundBloc (over) and 1x 15mm Gyproc Durafine (under) board each side with Gyproframe 22 S 10 studs @ 600mm c/c - one frame constructed slab to slab at 3000mm high max and other frame built full height but based in floor slabs at 3500mm max vertical centres with Gyproframe MF 7 channel channel each end with Gyproframe GA 3 angle with 100mm Isover Acoustic Partition Roll in system cavity.
Rw 69 dB - 60 mins FR - Severe duty.

Type 5 (Lining)
1 x 15mm Gyproc Durafine board to room face of Gyproframe Universal Wall Lining with Gyproframe GL 1 channels spaced @ 600mm on set between Gyproframe GL 1 floor and ceiling channel with GL2 brackets spaced at 600mm vertical centres. Stand off 25mm min to 125mm max.

Type 6
Painted Concrete

Type 7
Painted infaced blockwork

Type 8
Full height curtain wall to sub-contractor detail design

© Scott Brownrigg Ltd

Figured dimensions only are to be taken from this drawing. All dimensions are to be checked on site before any work is put in hand.

General Notes:
"x" denotes where plasterboard will be used on single side of gyproframe
"NS" denotes moisture resistant variant of outer board of respective face.
Partition systems to include deflection heads to accommodate +/- 20mm.
18mm plywood lining grounds on Gyproframe Service Support Plates where required.

All exposed drying junctions to door sills to be protected by Gyproc edge bead.

Gradius Armoured 3.5mm(T) x 150mm(D) PVC-U Medium duty wall protection. Adhesive fixed @ 800mm CL FFL Colour TBC.

Gradius Fixed - Angle Corner Guard (2.1m). Adhesive fixed. Colour TBC.

Area of wall to receive gyproframe 99FC50 reinforcement Ref SBR-Z357 Detail 14x15 @ heights TBC

All columns to be painted concrete, all exposed concrete finishes to S/E specification

Area to receive 2x 12.5mm plasterboard boxing around pipe, pipe to be lined with 25mm Isover. Stand off 25mm min to 125mm max.
Ref Drawing 13641 Z.323 & 13641 Z324

Internal Fire Walls - Legend

	30 MINUTES FIRE RESISTANT CONSTRUCTION / ENCLOSURE
--	--

03	Update of Balustrade types as instructed	CB	20Jul09	CP
02	Corridor given 30 min fire rating	CB	11Jun09	CP
01	Revised door and VP numbers, issued for construction.	CP	12May09	CB
Mark	Revision	Drawn	Date	Checked

SCOTT BROWNRIGG

St Catherine's Court
46-48 Portsmouth Road
Guildford GU2 4DU
T +44 (0)1483 568685
F +44 (0)1483 575830
W scottbrownrigg.com

Client's name
Willmott Dixon

Job title
St Bartholomew's School

Drawing title
**Curmook
First Floor Plan
Wall Types (C)**

Scale
1: 100 @ A1

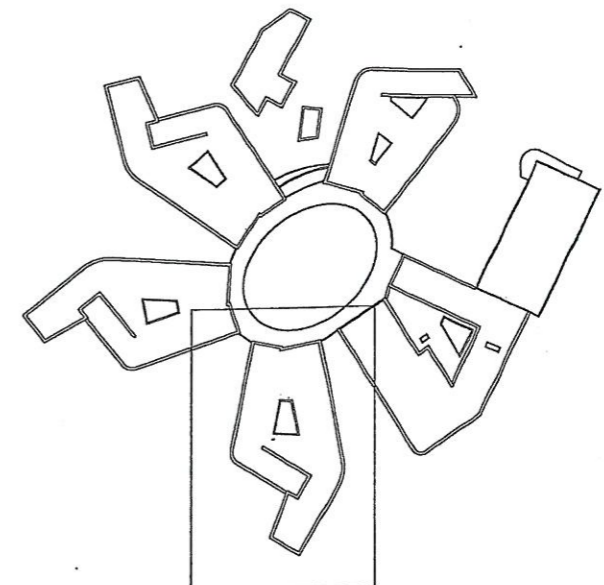
Drawn	Checked	Date
mal	mal	15Apr08

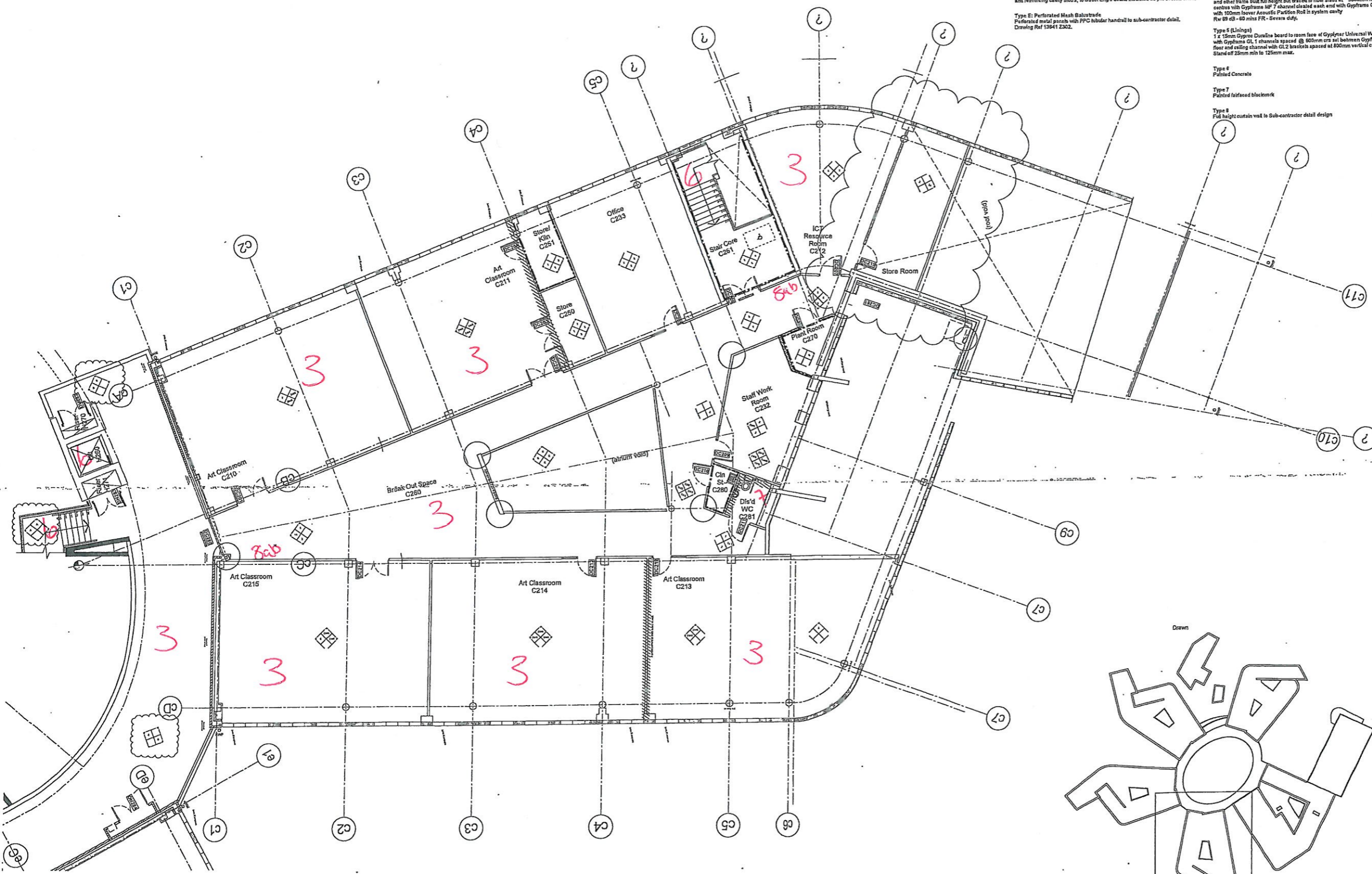
Job No
13641

Drawing No
SBR 13641 C 108

Rev
03

Status
CONSTRUCTION





Key to Balustrade Types: Ref drawing 13641 218 & 232
(All Barrier types to be raised in accordance with current and relevant BS Codes)

Type A: Mesh Panel Balustrade
Flat mesh panels with PFC steel post assemblies and profiled handrails. Colour: TBC. Modular panels, (mm-950 x 1150).

Type B: Concrete Wall Balustrade
1100 high reinforced concrete upstand to S.E detail. Painted finish. Colour: TBC.

Type C: Glass Panel Balustrade
Clear laminated glass 'jig-dilled' balustrade panels, with six patch fittings; Modular panels, (mm-950 x 1150), fixed through steel hollow post assemblies and profiled stainless steel handrails.

Type D: Block Wall Balustrade
Fibrecrete block tied to reinforced concrete upstand, re-constituted stone coping and reinforcing cavity studs; to Struct Eng's detail, insulated as per section detail.

Type E: Perforated Mesh Balustrade
Perforated metal panels with PFC hollow handrail to sub-contractor detail. Drawing Ref 13641 2302.

Type 1
102mm Gyproc ROBUST consisting of 1 x 15mm Gyproc Duraline board each side of Gyproframe 70 S 60 studs @ 600mm c/c with 50mm Isover Acoustic Partition Roll in system cavity
Rw 47dB - 60 mins FR - 4000mm max height - Severe duty.

Type 2
102mm Gyproc ROBUST consisting of 1 x 15mm Gyproc Duraline board each side of Gyproframe 70 S 60 studs @ 600mm c/c with 75mm Isover Acoustic Partition Roll in system cavity
Rw 51dB - 60 mins FR - 4000mm max height - Severe duty.

Type 3
205mm Gyproc Classic consisting of 1x 15mm Gyproc SoundBloc (one) and 1x 15mm Gyproc Duraline (two) board each side of Gyproframe 140 AS 50 Acoustuds @ 600mm c/c with 100mm Isover Acoustic Partition Roll in system cavity
Rw 62 dB - 60 mins FR - 6100mm max height - Severe duty.

Type 4
300mm Gyproc Audio consisting of 1x 15mm Gyproc SoundBloc (one) and 1x 15mm Gyproc Duraline (two) board each side with Gyproframe 92 S 10 studs @ 600mm c/c; one frame constructed side by side at 3500mm high max and other frame built full height but braced to floor slabs at 3800mm max vertical centres with Gyproframe MF 7 channels attached each end with Gyproframe CA 3 angle
Rw 69 dB - 60 mins FR - 6100mm max height - Severe duty.

Type 5 (Linings)
1 x 15mm Gyproc Duraline board to room face of Gyproframe Universal Wall Lining with Gyproframe GL 1 channels spaced @ 600mm c/c set between Gyproframe GL 8 floor and ceiling channel with GL2 brackets spaced at 600mm vertical centres stand off 25mm min to 125mm max.

Type 6
Painted Concrete

Type 7
Painted fairfaced blockwork

Type 8
Full height curtain wall to sub-contractor detail design

© Scott Brownrigg Ltd

Figured dimensions only are to be taken from this drawing. All dimensions are to be checked on site before any work is put in hand.

General Notes:
"a" denotes where plasterboard will be used on single side of gyproframe
"MFC" denotes moisture resistant variant of outer board of respective face.
Partition systems to include deflection heads to accommodate +/- 20mm. 18mm plywood fixing grounds on Gyproframe Service Support Plates required.

All exposed drying junctions in door stools to be protected by Gyproc edge bead.

Glasin Armoured 2.5mm (7 x 120mm) PVC-U Medium duty wall protection. Adhesive fixed @ 800mm GL.FFL Colour: TBC.

○ Gradus Flex - Angle Corner Guard (2.1m). Adhesive fixed. Colour: TBC

Area of wall to receive gyproframe 20FC50 reinforcement Ref SBR-2357 Detail 14+15 @ heights TBC

All columns to be painted concrete, all exposed concrete finishes to S/E specification

○ Area to receive 2 x 15mm Duraline boxing around pipe, pipe to be lined with 25mm Iso wool
Ref Drawing 13641 2.323 & 13641 2324

Initial File Wks: Legend

30 MINUTES FIRE RESISTANT CONSTRUCTION / ENCLOSURE	-----
--	-------

03	Revised in accordance with CAI 24.4	CB	15Mar10	JG
02	Update of Balustrade types as instructed	CB	26Jul09	CP
01	Revised door and VP numbers, issued for construction	CP	12Mar08	CB
Mark:	Revision		Date	Drawn

SCOTT BROWNRI GG

St Catherine's Court
46-48 Portsmouth Road
Guildford GU2 4DU
T +44 (0)1483 588686
F +44 (0)1483 575830
W scottbrownrigg.com

Client's name
Willmott Dixon

Job title
St Bartholomew's School

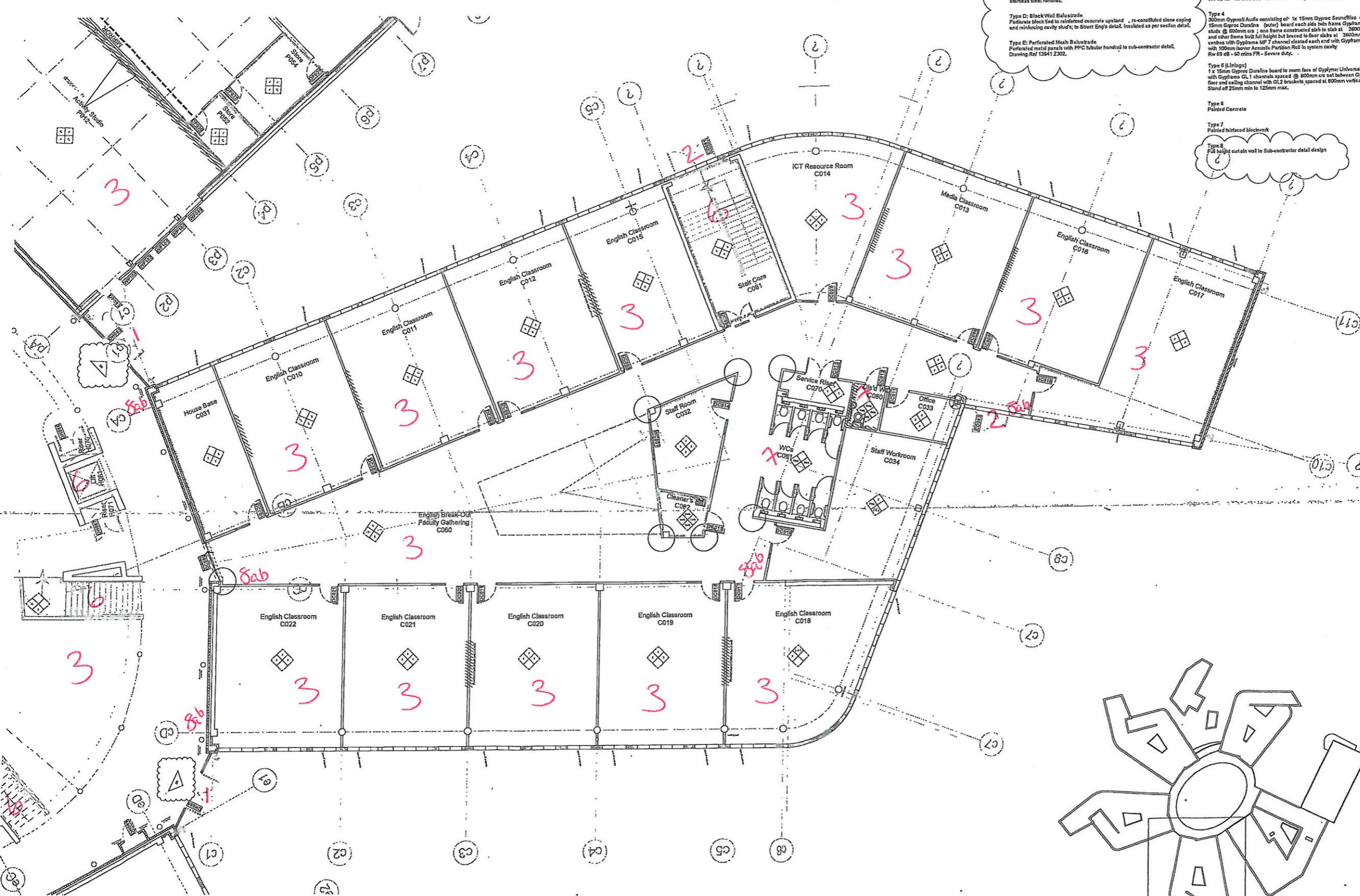
Drawing title
**Curnock
Second Floor Plan
Wall Types (C)**

Scale
1 : 100 @ A1

Drawn	mal	Checked	mal	Date	15Apr08
-------	-----	---------	-----	------	---------

Job No	13641	Drawing No	SBR 13641 C 109	Rev	03
--------	-------	------------	-----------------	-----	----

Status
CONSTRUCTION



Key to Balustrade Types: Ref drawing 13641 Z18 A 2322
(All Barrier types to be rated in accordance with current and relevant BS Codes)

Type A: Mesh Panel Balustrade
Flat mesh panels with PPG steel post assemblies and profiled handrails. Colour TBC. Modular panels, (nom-850 x 1150).

Type B: Concrete Wall Balustrade
1100 high reinforced concrete upstand to 9.E detail, Painted finish, Colour TBC.

Type C: Glass Panel Balustrade
Clear laminate glass 'pre-drilled' balustrade panels, with six patch fixings; Modular panels, (nom: 950 x 1070), fixed through steel hollow post assemblies and profiled thickness steel handrail.

Type D: Block Wall Balustrade
Particrete block fixed to reinforced concrete upstand, re-constituted stone coping and reinforcing cavity stud; to 9.A detail, Insulated as per section detail.

Type E: Perforated Mesh Balustrade
Perforated metal panels with PPG tubular handrail to sub-contractor detail. Drawing Ref 13641 Z302.

Key to Wall Types

Type 1
102mm Gyproc ROBUST consisting of 1 x 15mm Gyproc Duraline board each side of Gyproc 70 S 60 studs @ 600mm c/s with 50mm Isover Acoustic Partition Felt in system cavity. Rw 47dB - 60 mins FR - 4000mm max height - Severe duty.

Type 2
102mm Gyproc ROBUST consisting of 1 x 15mm Gyproc Duraline board each side of Gyproc 70 S 60 studs @ 600mm c/s with 75mm Isover Acoustic Partition Felt in system cavity. Rw 51dB - 60 mins FR - 4000mm max height - Severe duty.

Type 3
200mm Gyproc Classic consisting of 1x 15mm Gyproc SoundBloc (over) and 1x 15mm Gyproc Duraline (outer) board each side of Gyproc 148 AB 50 Acousthulst @ 600mm c/s with 100mm Isover Acoustic Partition Felt in system cavity. Rw 62 dB - 60 mins FR - 8100mm max height - Severe duty.

Type 4
300mm Gyproc Audo consisting of: 1x 15mm Gyproc SoundBloc (over) and 1x 15mm Gyproc Duraline (outer) board each side with Gyproc 92 B 10 studs @ 600mm c/s; one frame constructed slab to slab at 3900mm high max and other frame sub slab height but fixed to floor slabs at 3600mm max vertical centres with Gyproc MF 7 channel cleated each end with Gyproc GA 3 angle with 100mm Isover Acoustic Partition Felt in system cavity. Rw 63 dB - 60 mins FR - Severe duty.

Type 5 (Linings)
1x 15mm Gyproc Duraline board to room face of Gyproc Universal Wall Lining with Gyproc GL 1 channels spaced @ 600mm c/s and between Gyproc GL 8 floor and ceiling channel with GL 2 brackets, spaced at 800mm vertical centres. Stand off 25mm min to 125mm max.

Type 6
Painted Concrete

Type 7
Painted hatched blockwork

Type 8
Full height curtain wall to sub-contractor detail design

© Scott Brownrigg Ltd

Figured dimensions only are to be taken from this drawing. All dimensions are to be checked on site before any work is put in hand.

General Notes:
"z" denotes where plasterboard will be used on single side of gyproca.
"MFC" denotes moisture resistant variant of outer board of respective face.
Partition systems to include deflection heads to accommodate +/- 25mm.
15mm plywood fixing grounds on Gyproca Service Support Plates, where required.

All exposed drying junctions to door sills to be protected by Gyproc edge bead.

Grades Armad 3.5mm(7) x 150mm(9) PVC-U Medium duty wall protection. Adhesive fixed @ 600mm CL. FFL Colour TBC.

Gratus Flex - Angle Corner Guard (2.1m). Adhesive fixed. Colour TBC

Area of wall to receive gyproca 98FC50 reinforcement Ref SBR-Z357 Detail 14+15 @ heights TBC

All columns to be painted concrete, all exposed concrete finishes to S/E specification

Area to receive 2x 12.5mm plasterboard basing around pipe, pipe to be fixed with 25mm (swool) Ref Drawing 13641 Z 323 & 13641 Z324

Internal Fire Walls - Legend			
	30 MINUTES FIRE RESISTANT CONSTRUCTION / ENCLOSURE	CL	CL

Rev	Description	By	Date	Checked
02	Update of Balustrade types as instructed	CB	20Jul09	CP
01	Revised door and VP numbers, issued for construction.	CP	12May09	CB
Mark	Revision	Drawn	Date	Checked

SCOTT BROWNRIGG

St Catherine's Court
46-48 Portsmouth Road
Guildford GU2 4DU
T +44 (0)1483 589888
F +44 (0)1483 578830
W scottbrownrigg.com

Client's name
Willmott Dixon

Job title
St Bartholomew's School

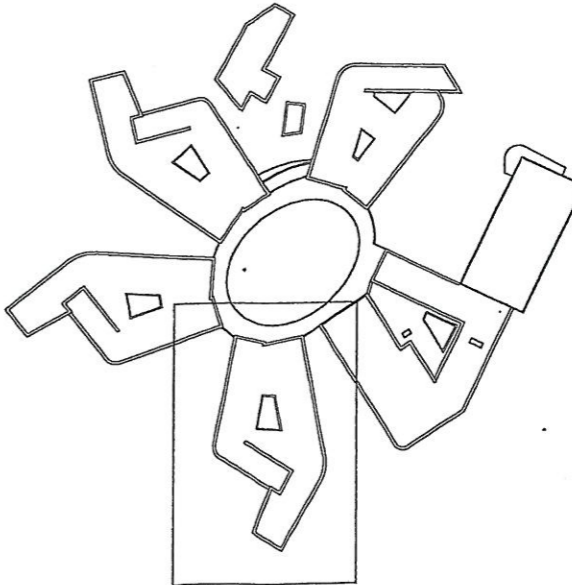
Drawing title
**Curnock
Ground Floor Plan
Wall Types (C)**

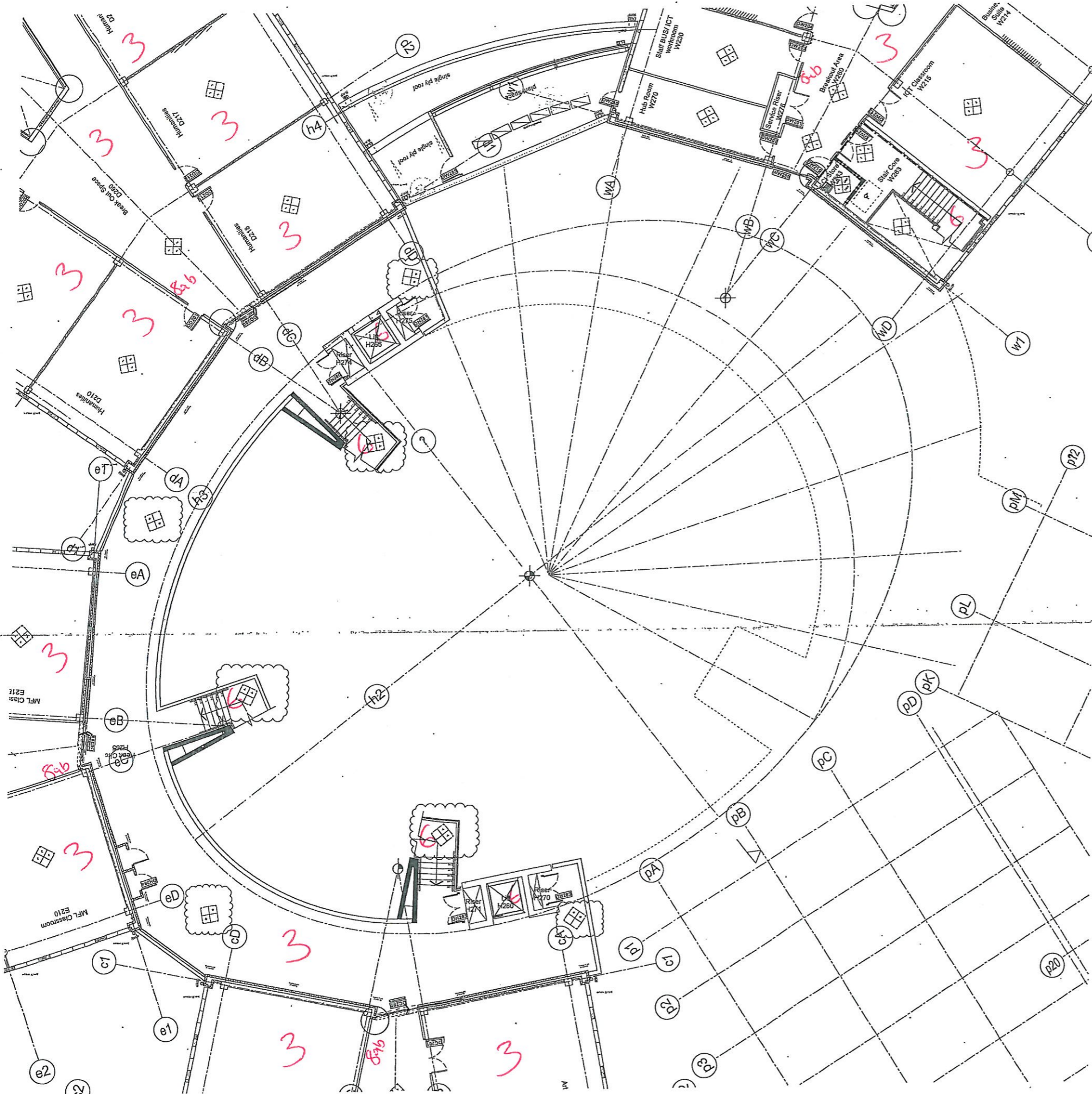
Scale
1 : 100 @ A1

Drawn	Checked	Date
mal	mal	15Apr08

Job No	Drawing No	Rev
13641	SBR 13641 C 107	02

Stabs
CONSTRUCTION





Key to Wall Types

- Type 1
100mm Gyproc ROBUST consisting of 1x 15mm Gyproc Duraline board each side of Gyproframe 70 S 60 studs @ 600mm c/c with 50mm Isover Acoustic Partition Roll in system cavity
Rw 47dB - 60 mins FR - 4000mm max height - Severe duty.
- Type 2
100mm Gyproc ROBUST consisting of 1x 15mm Gyproc Duraline board each side of Gyproframe 70 S 60 studs @ 600mm c/c with 75mm Isover Acoustic Partition Roll in system cavity
Rw 51dB - 60 mins FR - 4000mm max height - Severe duty.
- Type 3
200mm Gyproc Classic consisting of 1x 15mm Gyproc SoundBloc (inner) and 1x 15mm Gyproc Duraline (outer) board each side of Gyproframe 140 AC 50 Acoustics @ 600mm c/c with 100mm Isover Acoustic Partition Roll in system cavity
Rw 62 dB - 60 mins FR - 6100mm max height - Severe duty.
- Type 4
300mm Gyproc Audio consisting of 1x 15mm Gyproc SoundBloc (inner) and 1x 15mm Gyproc Duraline (outer) board each side of Gyproframe 140 AC 50 Acoustics @ 600mm c/c with one frame constructed slab in slab at 3000mm high max and other frame built full height but braced to floor slabs at 3000mm max vertical centres with Gyproframe 140 F channels spaced each end with Gyproframe GA 3 angle
Rw 65 dB - 60 mins FR - Severe duty.
- Type 5 (Linings)
1x 15mm Gyproc Duraline board to room face of Gyproframe Universal Wall Lining with Gyproframe GL 1 channels spaced @ 600mm c/c between Gyproframe GL 8 floor and ceiling channel with GL2 brackets spaced at 600mm vertical centres
Stand off 25mm min to 125mm max.
- Type 6
Painted Concrete
- Type 7
Painted half-faced brickwork
- Type 8
Full height curtain wall to sub-contractor detail design

© Scott Brownrigg Ltd

Figured dimensions only are to be taken from this drawing. All dimensions are to be checked on site before any work is put in hand.

General Notes:
 *x: denotes where plasterboard will be used on single side of gyproframe
 *M: denotes moisture resistant variant of outer board of respective face.
 Partition systems to include deflection heads to accommodate +/- 20mm, 18mm plywood furring grounds on Gyproframe Service Support Plates where required.

All exposed drying/junctions to door sets to be protected by Gyproc edge bead.

 Gradus Armadillo 3.5mm (7) x 150mm (6) P/VOa Medium duty wall protection. Adhesive fixed @ 800mm GL.FFL Colour TBC.

○ Gradus Flex - Angle Corner Guard (2.1m). Adhesive fixed. Colour: TBC

Area of wall to receive gyproframe 99FCSD reinforcement Ref SBR-2357 Detail 14+15 @ heights TBC

All columns to be painted concrete, all exposed concrete finishes to S/E specification

○ Area to receive 2x 12.5mm plasterboard boxing around pipe, pipe to be fixed with 25mm Isovol Ref Drawing 13541 Z.323 & 13541 Z.324

Key to Balustrade Types: Ref Drawings 13541 Z16 & Z332
 (All Balustrade types to be noted in accordance with curtain and relevant BS:Codes)

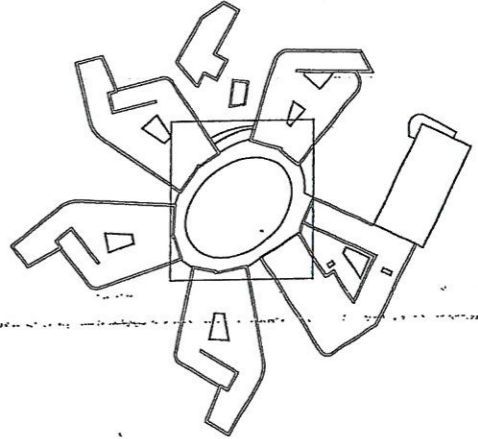
Type A: Mesh Panel Balustrade
 Flat mesh panels with PPC stiped post assemblies and profiled handrails. Colour: TBC. Modular panels, (span 900 x 1150).

Type B: Concrete Wall Balustrade
 1100 high reinforced concrete upstand to S/E detail. Painted finish. Colour: TBC.

Type C: Glass Panel Balustrade
 Clear laminated glass 'joggled' balustrade panels, with s/s patch fixings; Modular panels, (span: 900 x 1575), fixed through steel hollow post assemblies and profiled stainless steel handrail.

Type D: Black Wall Balustrade
 Ferretcrete block fixed to reinforced concrete upstand, re-consolidated stone capping and reinforcing cavity stud; to Struct Eng's detail, insulated as per section detail.

Type E: Perforated Mesh Balustrade
 Perforated metal panels with PPC tubular handrail to sub-contractor detail. Drawing Ref 13541 Z302.



02	Update of Balustrade types as instructed	CB	24Jul08	CP
01	Revised door and VP numbers, issued for construction.	CP	12May08	CB
Mark	Revision	Drawn	Date	Checked

SCOTT BROWNRIGG

St Catherine's Court
 46-48 Portsmouth Road
 Guildford GU2 4DU
 T +44 (0)1483 568888
 F +44 (0)1483 575830
 W scottbrownrigg.com

Client's name
Willmott Dixon

Job title
St Bartholomew's School

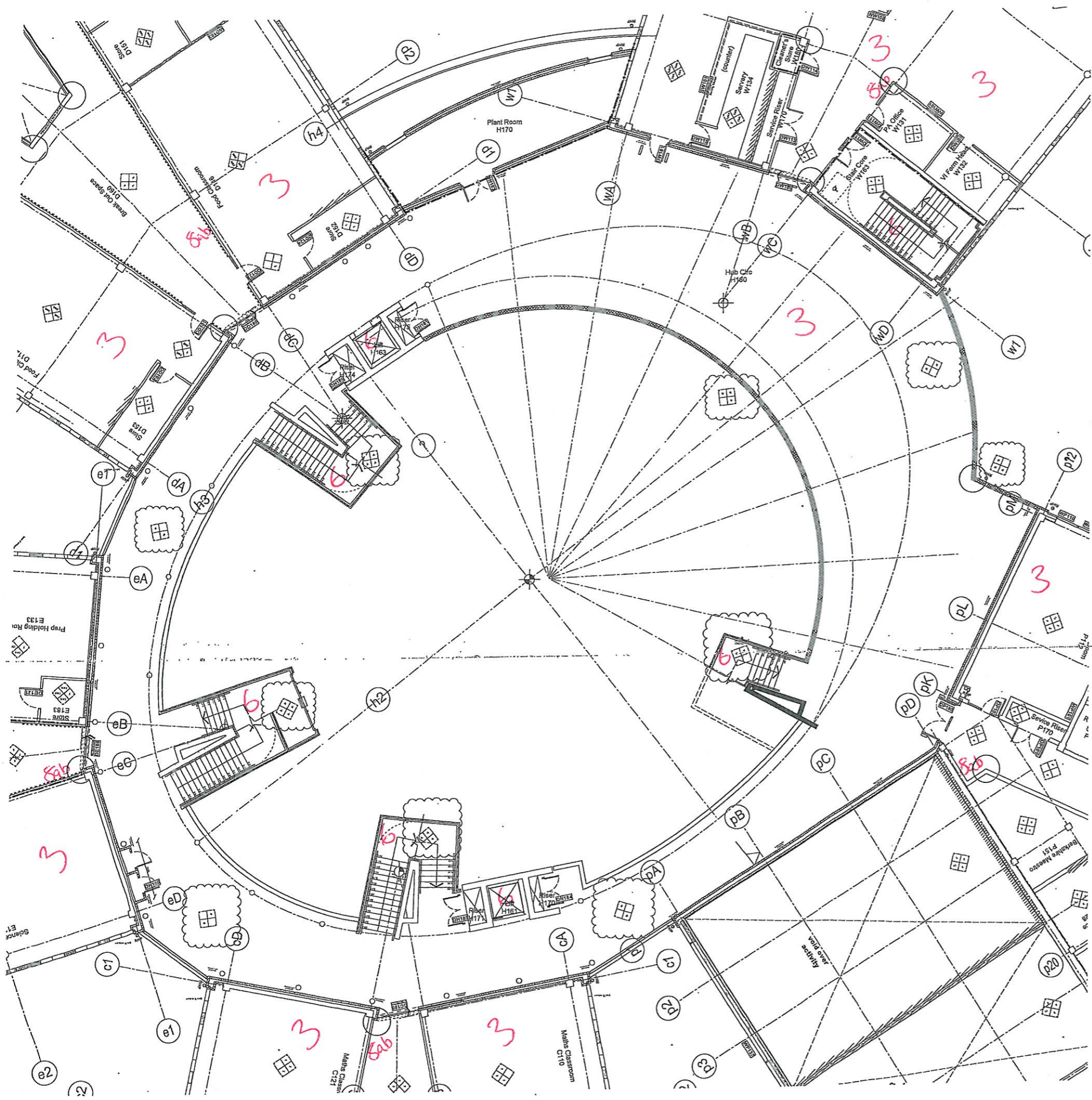
Drawing title
**Hub Space
 Second Floor Plan
 Wall Types (H)**

Scale
1 : 100 @ A1

metres	0	5	10
Drawn	mal	Checked	mal
Date		Date	13May08

Job No	Drawing No	Rev
13641	SBR 13641 H 109	02

Status
CONSTRUCTION



Key to Wall Types

- Type 1
102mm Gyproc ROBUST consisting of 1 x 15mm Gyproc Duraline board each side of Gyproc 70 x 60 studs @ 600mm c/c with 25mm Isover Acoustic Partition Roll in system cavity.
Rw 41dB - 60 mins FR - 4000mm max height - Severe duty.
- Type 2
102mm Gyproc ROBUST consisting of 1 x 15mm Gyproc Duraline board each side of Gyproc 70 x 60 studs @ 600mm c/c with 75mm Isover Acoustic Partition Roll in system cavity.
Rw 51dB - 60 mins FR - 4000mm max height - Severe duty.
- Type 3
238mm Gyproc Classic consisting of 1x 15mm Gyproc SoundBloc (inner) and 1x 15mm Gyproc Duraline (outer) board each side of Gyproc 140 x 50 Acoustic Partition Roll in system cavity.
Rw 62 dB - 60 mins FR - 6100mm max height - Severe duty.
- Type 4
300mm Gyproc Acoustic consisting of 1x 15mm Gyproc SoundBloc (inner) and 1x 15mm Gyproc Duraline (outer) board each side twin frame Gyproc 92 x 10 studs @ 500mm c/c - one frame constructed slab to slab at 3500mm high max studs and other frame built full height but based to floor slabs at 3500mm max vertical centres with Gyproc MP 7 channel cleated each end with Gyproc GA 3 angle with 100mm Isover Acoustic Partition Roll in system cavity.
Rw 63 dB - 60 mins FR - Severe duty.
- Type 5 (Linings)
1 x 15mm Gyproc Duraline board to room face of Gyproc Universal Wall Lining with Gyproc GL 1 channels spaced @ 600mm c/c set between Gyproc GL 8 Gear and ceiling channel with GL2 brackets spaced at 600mm vertical centres Slated off 25mm min to 125mm max.
- Type 6
Painted Concrete
- Type 7
Painted fairfaced blockwork
- Type 8
Full height curtain wall to sub-contractor detail design

- Key to Balustrade Types: Ref drawing 13641 Z16 & Z22**
(All Balustrade types to be varied in accordance with current and relevant BS Codes)
- Type A: Mesh Panel Balustrade
Flat mesh panels with PPC steel post assemblies and profiled handrails. Colour: TBC. Modular panels, (nom-850 x 1150).
 - Type B: Concrete Wall Balustrade
1100 high reinforced concrete upstand to S.E. detail. Painted finish. Colour: TBC.
 - Type C: Glass Panel Balustrade
Clear laminated glass 'pan-dried' balustrade panels, with u/s patch fixings; Modular panels, (nom-850 x 1170), fixed through steel hollow post assemblies and profiled stainless steel handrail.
 - Type D: Block Wall Balustrade
Fairfaced block tied to reinforced concrete upstand, re-consolidated stone coping and reinforcing cavity stud; to Struct Eng's detail. Insulated as per section detail.
 - Type E: Perforated Mesh Balustrade
Perforated metal panels with PPC balustrade handrail to sub-contractor detail. Drawing Ref 13641 Z302.

© Scott Brownrigg Ltd

Figured dimensions only are to be taken from this drawing. All dimensions are to be checked on site before any work is put in hand.

General Notes:
* As shown unless plasterboard will be used on single side of gyproc frame.
* MFC denotes moisture resistant variant of outer board of respective face.
* Partition systems to include deflection heads to accommodate +1-25mm, 18mm plywood fixing grounds on Gyproc Service Support Plates, where required.

All exposed drying joints to door sets to be protected by Gyproc edge bead.

Grades Attached 3.5mm(7) x 150mm(4) PVC-U Medium duty wall protection, Adhesive fixed @ 800mm CL, PFL Colour: TBC.

Gradius Flexi - Angle Corner Guard (2.1m), Adhesive fixed. Colour: TBC

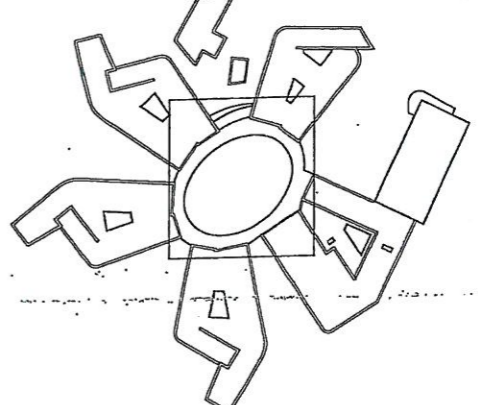
Area of wall to receive gyproc frame SBRFC50 reinforcement Ref SBR-Z357 Detail 14*15 @ heights TBC

All columns to be painted concrete, all exposed concrete finishes to S/E specification

Area to receive 2x 12.5mm plasterboard housing around pipe, pipe to be fixed with 25mm Isovol Ref Drawing 13641 Z.323 & 13641 Z324

Internal Fire Walls: Legend

30 MINUTES FIRE RESISTANT CONSTRUCTION ENCLOSURE	---
--	-----



02	Update of Balustrade types as instructed	CB	24Jun08	CP
01	Revised door and VP numbers, issued for construction.	CP	12May08	CB
Mark	Revision	Drawn	Date	Checked

SCOTT BROWNRIGG

St Catherine's Court
46-48 Portsmouth Road
Guildford GU2 4DU
T +44 (0)1483 558885
F +44 (0)1483 575830
W scottbrownrigg.com

Client's name
Willmott Dixon

Job title
St Bartholomew's School

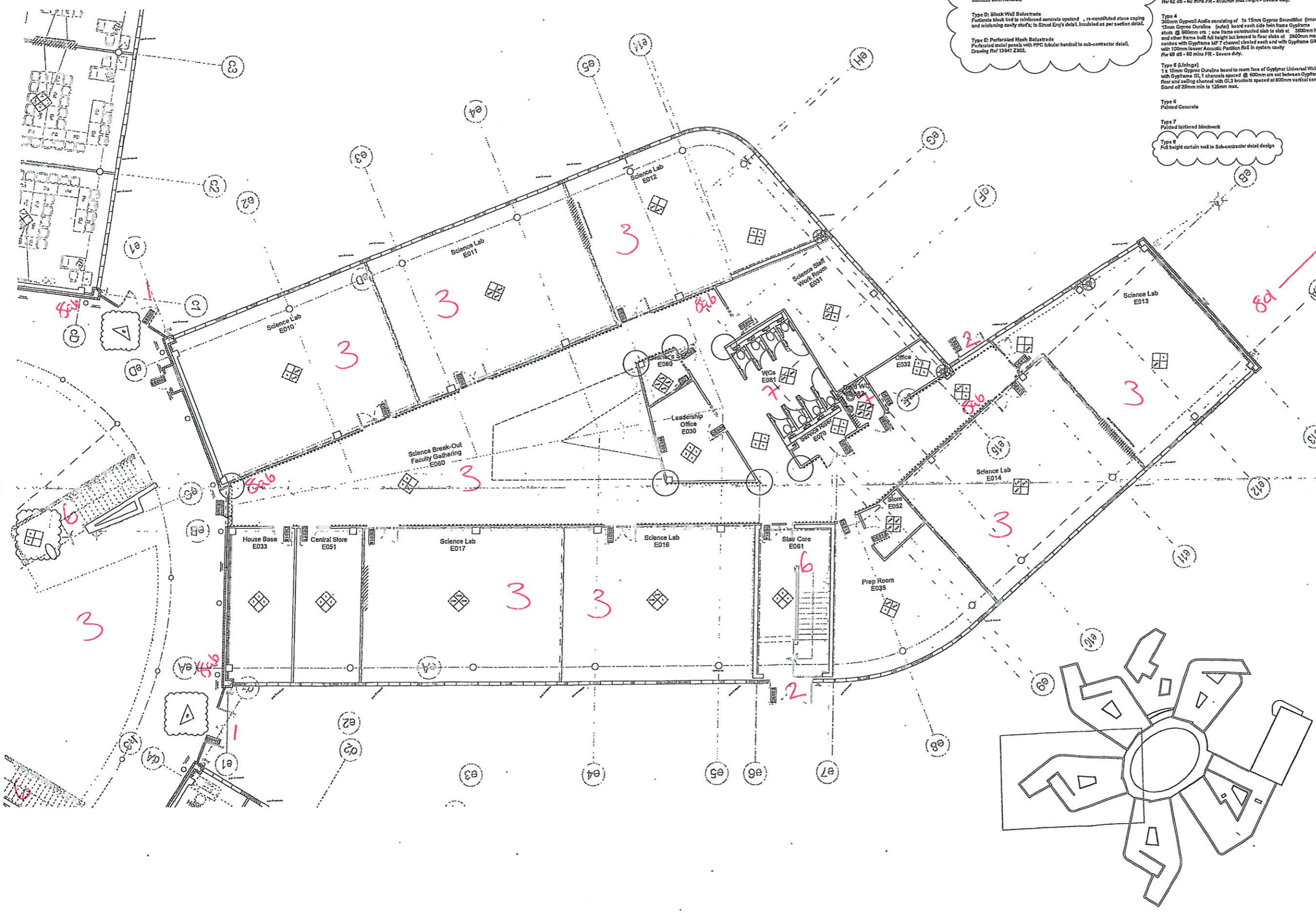
Drawing title
**Hub Space
First Floor Plan
Wall Types (H)**

Scale
1:100 @ A1

Drawn	mal	Checked	mal	Date	13May08
-------	-----	---------	-----	------	---------

Job No	13641	Drawing No	SBR 13641 H 108	Rev	02
--------	-------	------------	-----------------	-----	----

Status
CONSTRUCTION



Key to Balustrade Types: Ref drawing 13641 Z 141 & 2322
 (All Balustrade types to be noted in accordance with current and relevant BS/Codes)

Type A: Mesh Panel Balustrade
 Flat mesh panels with PPC steel post assemblies and profiled handrails. Colour: TBC. Modular panels, (nom-950 x 1150).

Type B: Concrete Wall Balustrade
 1100 high reinforced concrete upstand to S.E detail. Painted finish. Colour TBC.

Type C: Glass Panel Balustrade
 Clear laminated glass 'pre-drilled' balustrade panels, with stainless steel fixings. Modular panels, (nom-950 x 1150), fixed through steel holdoverpost assemblies and profiled stainless steel handrails.

Type D: Block Wall Balustrade
 Fairfaced block tied to reinforced concrete upstand, re-constituted stone coping and reinforcing cavity stud's; to Stuart Eng's detail. Insulated as per section detail.

Type E: Perforated Mesh Balustrade
 Perforated metal panels with PPC tubular handrail to sub-contractor detail. Drawing Ref 13641 2302.

Key to Wall Types

Type 1
 152mm Gyproc ROBUST consisting of 1 x 15mm Gyproc Duraline board each side of Gyproframe 70 S 60 studs @ 600mm c/s with 50mm Isover Acoustic Partition Roll in system cavity. Rw 47dB - 60 mins FR - 4000mm max height - Severe duty.

Type 2
 152mm Gyproc ROBUST consisting of 1 x 15mm Gyproc Duraline board each side of Gyproframe 70 S 60 studs @ 600mm c/s with 75mm Isover Acoustic Partition Roll in system cavity. Rw 51dB - 60 mins FR - 4000mm max height - Severe duty.

Type 3
 200mm Gyproc Classic consisting of 1x 15mm Gyproc Soundline (inner) and 1x 15mm Gyproc Duraline (outer) board each side of Gyproframe 146 AS 50 Acoustics @ 600mm c/s with 100mm Isover Acoustic Partition Roll in system cavity. Rw 62 dB - 60 mins FR - 8100mm max height - Severe duty.

Type 4
 300mm Gyproc Audio consisting of 1x 15mm Gyproc Soundline (inner) and 1x 15mm Gyproc Duraline (outer) board each side of Gyproframe 92 S 10 studs @ 600mm c/s; one frame constructed slab to slab at 3000mm high max and other frame built full height but braced to floor slabs at 3000mm max vertical centres with Gyproframe MF 7 channel created each end with Gyproframe GA 3 angle with 100mm Isover Acoustic Partition Roll in system cavity. Rw 68 dB - 60 mins FR - Severe duty.

Type 5 (Linings)
 1 x 15mm Gyproc Duraline board to rear face of Gyproframe Universal Wall Lining with Gyproframe GL 1 channels spaced @ 600mm c/s set between Gyproframe GL 8 floor and ceiling channel with GL 2 brackets spaced at 600mm vertical centres. Stand of 25mm min to 125mm max.

Type 6
 Painted Concrete

Type 7
 Painted fairfaced blockwork

Type 8
 Full height curtain wall to sub-contractor detail design

© Scott Brownrigg Ltd

Figured dimensions only are to be taken from this drawing. All dimensions are to be checked on site before any work is put in hand.

General Notes:
 *C denotes where plasterboard will be used on single side of gyproframe.
 *MR denotes moisture resistant variant of outer board of respective fixer.
 Partition systems to include side-sill heads to accommodate +/- 20mm, where required.

All exposed drying joints to door sets to be protected by Gyproc edge bead.

Gradius Armaclad 3.5mm(T) x 150mm(P) PVC-U Medium duty wall protection. Adhesive fixed @ 800mm CL PFL Colour TBC.

Gradius Flexi - Angle Corner Guard (2.1m). Adhesive fixed. Colour TBC

Area of wall to receive gyproframe 99FC50 reinforcement. Ref SBR-Z357 Detail 14+15 @ height TBC

All columns to be painted concrete, all exposed concrete finishes to S/E specification

Area to receive 2x 12.5mm plasterboard baring around pipe, pipe to be lined with 25mm Isovol Ref Drawing 13641 Z 323 & 13641 2324

Internal Fire Walls Legend

30 MINUTES FIRE RESISTANT CONSTRUCTION / ENCLOSURE	1000 x 1000 x 1000
--	--------------------

02	Update of Balustrade Type as instructed.	CB	20/1/08	CP
01	Revised door and VP numbers, issued for construction.	CP	12/May/09	CB
Mark	Revision	Drawn	Date	Checked

SCOTT BROWNRIFF

St Catherine's Court
 46-48 Portsmouth Road
 Guildford GU2 4DU
 T +44 (0)1483 566686
 F +44 (0)1483 575830
 W scottbrownrigg.com

Client's name
 Willmott Dixon

Job title
 St Bartholomew's School

Drawing title
 Evers
 Ground Floor Plan
 Wall Types (E)

Scale
 1: 100 @ A1

metres	0	5	10
Drawn	Checked	Date	
ML	ML	15Apr08	

Job No	Drawing No	Rev
13641	SBR 13641 E 107	02

Status
 CONSTRUCTION



Key to Balustrade Types: Ref drawing 13641 Z16 & Z32
 (All Barrier types to be raised in accordance with current and relevant BS Codes)

Type A: Mesh Panel Balustrade
 Flat mesh panels with PPC steel post assemblies and profiled handrails. Colour: TBC. Modular panels, (nom-950 x 1150).

Type B: Concrete Wall Balustrade
 1100 high reinforced concrete upstand to S.E detail. Painted finish, Colour TBC.

Type C: Glass Panel Balustrade
 Clear laminated glass 'pre-filled' balustrade panels, with slip panels; Modular panels, (nom-950 x 1175), fixed through steel hotfix post assemblies and profiled stainless steel handrails.

Type D: Block Wall Balustrade
 Porcelain block tied to reinforced concrete upstand, re-combined stone coping and reinforcing cavity stud; to Struct Eng's detail. Insulated as per section detail.

Type E: Perforated Mesh Balustrade
 Perforated metal panels with PPC tubular handrail to sub-contractor detail. Drawing Ref: 13641 Z302.

Key to Wall Types

Type 1
 102mm Gyproc ROBUST consisting of 1 x 15mm Gyproc Duraline board each side of Gyproframe 70 & 60 studs @ 600mm c/c with 15mm Isover Acoustic Partition Roll in system cavity.

Type 2
 102mm Gyproc ROBUST consisting of 1 x 15mm Gyproc Duraline board each side of Gyproframe 70 & 60 studs @ 600mm c/c with 15mm Isover Acoustic Partition Roll in system cavity.

Type 3
 205mm Gyproc Classic consisting of 1 x 15mm Gyproc SoundBloc (inner) and 1 x 15mm Gyproc Duraline (outer) board each side of Gyproframe 140 AS 50 AcoustiBloc @ 600mm c/c with 100mm Isover Acoustic Partition Roll in system cavity.

Type 4
 205mm Gyproc Audio consisting of 1 x 15mm Gyproc SoundBloc (inner) and 1 x 15mm Gyproc Duraline (outer) board each side of Gyproframe 140 AS 50 AcoustiBloc @ 600mm c/c. 2 stud frame constructed slab to slab at 3600mm high max. floor and ceiling channel with full height but braced to floor slabs at 3600mm max vertical centres with Gyproframe MF 7 channel chased each end with Gyproframe GA 3 angle with 100mm Isover Acoustic Partition Roll in system cavity.

Type 5 (Lining)
 1 x 15mm Gyproc Duraline board to room face of Gyproframe Universal Wall Lining with Gyproframe GL 1 channels spaced @ 800mm c/c and between Gyproframe GL 8 floor and ceiling channel with GL2 brackets spaced at 800mm vertical centres. Stand off 25mm min to 125mm max.

Type 6
 Painted Concrete

Type 7
 Gyproc reinforced blockwork

Type 8
 Full height curtain wall to Sub-Contractor detail design

© Scott Brownrigg Ltd

Figured dimensions only are to be taken from this drawing. All dimensions are to be checked on site before any work is put in hand.

General Notes:
 * denotes plasterboard will be used on single side of gyproframe
 *MR denotes moisture resistant variant of outer board of respective face.
 Partition systems to include deflection heads to accommodate 4/-20mm, 16mm plywood fixing grounds on Gyproframe Service Support Plates where required.

All exposed drying junctions to door sets to be protected by Gyproc edge bead.

Grades Armaded 3.5mm(7) x 150mm(6) PVC-U Medium duty wall protection. Adhesive fixed @ 900mm CL PFL Colour TBC.

Grades Flexi - Angle Corner Guard (2.1m). Adhesive fixed. Colour TBC

Area of wall to receive gyproframe SBR/CS3 reinforcement Ref SBR-Z357 Detail 14+15 @ heights TBC

All columns to be painted concrete, all exposed concrete finishes to S/E specification

Area to receive 2 x 15mm Duraline boxing around pipe, pipe to be lined with 25mm Isover wool Ref Drawing 13641 Z 323 & 13641 Z324

Internal Fire Walls: Legend

30 MINUTES FIRE RESISTANT CONSTRUCTION / ENCLOSURE	-----
--	-------

03	Revised in accordance with CAI 24.4	CB	15Mar10	JG
02	Update of Balustrade Type as instructed	CB	20Jul09	CP
01	Revised door and VP numbers, issued for construction.	CP	12May08	CB
Mark	Revision		Date	Checked

SCOTT BROWNRI GG

St Catherine's Court
 45-48 Portsmouth Road
 Guildford GU2 4DU
 T +44 (0)1483 568686
 F +44 (0)1483 575830
 W scotbrownrigg.com

Client's name
Willmott Dixon

Job title
St Bartholomew's School

Drawing title
**Davis
 Second Floor Plan
 Wall Types (D)**

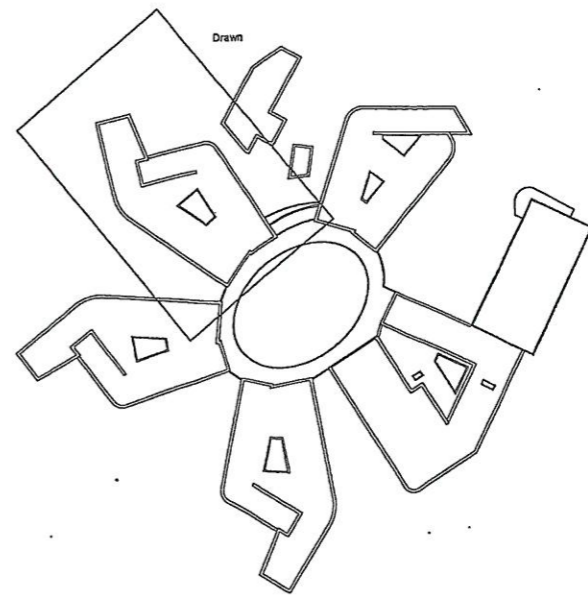
Scale
1 : 100 @ A1

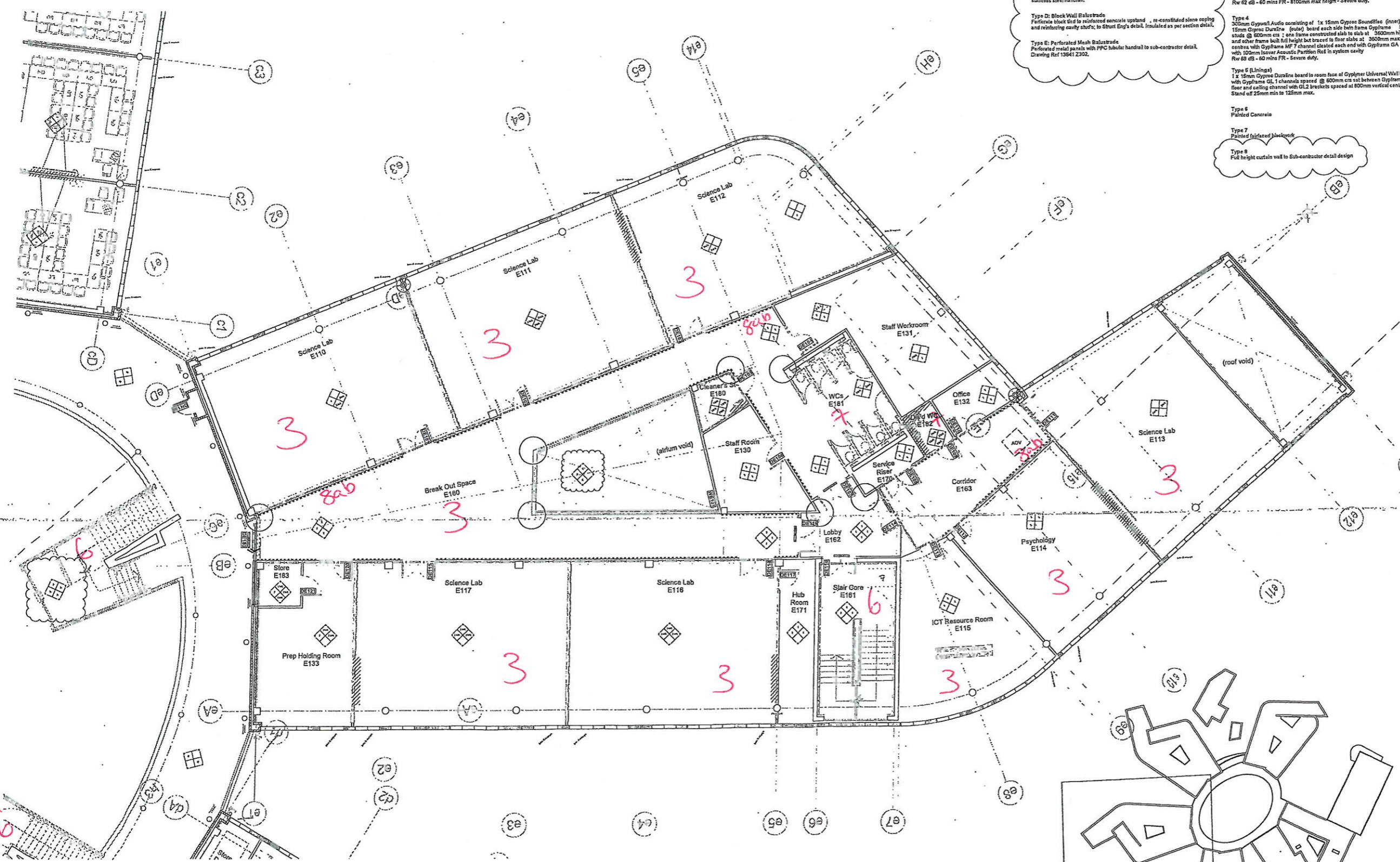
metres 0 5 10

Drawn mal Checked mal Date 15Apr08

Job No 13641 Drawing No SBR 13641 D 109 Rev 03

Status
CONSTRUCTION





Key to Balustrading Types; Ref drawings 13641 7.18 & 2.322
 (All Barrier types to be rated in accordance with current and relevant BS Codes)

Type A: Mesh Panel Balustrade
 Flat mesh panels with PPC site cast post assemblies and profiled handrails. Colour: TBC. Modular panels, (9mm-950 x 1150).

Type B: Concrete Wall Balustrade
 1100 Nch reinforced concrete upstand to S.E detail. Painted finish. Colour TBC.

Type C: Glass Panel Balustrade
 Clear laminated glass 'pre-drilled' balustrade panels, with site patch fixings; Modular panels, (9mm-950 x 1575), fixed through steel hollow post assemblies and profiled stainless steel handrails.

Type D: Block Wall Balustrade
 Reinforced block bed to reinforced concrete upstand, re-constructed along coping and reinforcing cavity stubs; to Struct Eng's detail. Insulated as per section detail.

Type E: Perforated Mesh Balustrade
 Perforated metal panels with PPC tubular handrail to sub-contractor detail. Drawing Ref 13641 2.302.

Key to Wall Types

Type 1
 102mm Gyproc ROBUST consisting of 1 x 15mm Gyproc Duraline board each side of Gyproframe 70 S 80 studs @ 600mm c/s with 50mm Isover Acoustic Partition Roll in system cavity
 Rv 47dB - 60 mins FR - 4000mm max height - Severe duty.

Type 2
 102mm Gyproc ROBUST consisting of 1 x 15mm Gyproc Duraline board each side of Gyproframe 70 S 80 studs @ 600mm c/s with 75mm Isover Acoustic Partition Roll in system cavity
 Rv 51dB - 60 mins FR - 4000mm max height - Severe duty.

Type 3
 206mm Gyproc Classic consisting of 1x 15mm Gyproc SoundBloc (inner) and 1x 15mm Gyproc Duraline (outer) board each side of Gyproframe 146 AS 50 Acoustuds @ 600mm c/s with 100mm Isover Acoustic Partition Roll in system cavity
 Rv 62 dB - 60 mins FR - 4100mm max height - Severe duty.

Type 4
 206mm Gyproc Audio consisting of 1x 15mm Gyproc SoundBloc (inner) and 1x 15mm Gyproc Duraline (outer) board each side of Gyproframe 92 S 10 studs @ 600mm c/s; one frame constructed slab to slab at 3000mm high max and other frame built full height but traced to floor slabs at 3000mm max vertical centres with Gyproframe MP7 channel detailed each end with Gyproframe GA 3 angle with 100mm Isover Acoustic Partition Roll in system cavity
 Rv 68 dB - 60 mins FR - Severe duty.

Type 5 (Linings)
 1 x 15mm Gyproc Duraline board to room face of Gyproframe Universal Wall Lining with Gyproframe GL 1 channels spaced @ 600mm c/s set between Gyproframe GL 8 floor and ceiling channel with GL2 brackets spaced at 600mm vertical centres. Stand off 25mm min to 125mm max.

Type 6
 Painted Concrete

Type 7
 Painted fairfaced blockwork

Type 8
 Full height curtain wall to sub-contractor detail design

© Scott Brownrigg Ltd

Figured dimensions only are to be taken from this drawing. All dimensions are to be checked on site before any work is put in hand.

General Notes:
 *x denotes where plasterboard will be used on single side of gyproframe
 *MRC denotes moisture resistant variant of outer board of respective face.
 Partition systems to include deflection heads to accommodate +/- 20mm, where planned fixing grounds on Gyproframe Service Support Plates where required.

All exposed drying joints to door sets to be protected by Gyproce edge bead.

Gradius Armadad 3.5mm(T) x 150mm(H) PVC-U Medium duty wall protection. Adhesive fixed @ 800mm CL PFL Colour TBC.

Gradius Flex - Angle Corner Guard (2.1m). Adhesive fixed. Colour TBC

Area of wall to receive gyproframe 99FC50 reinforcement Ref SBR-2357 Detail 14+15 @ heights TBC

All columns to be painted concrete, all exposed concrete finishes to S/E specification

Area to receive 2x 12.5mm plasterboard baring floor and ceiling channel with GL2 brackets spaced at 600mm vertical centres. Stand off 25mm min to 125mm max.

Ref Drawing 13641 2.323 & 13641 2.324

Internal Fix Walls: Legend

30 MINUTES FIRE RESISTANT CONSTRUCTION / ENCLOSURE	30 MINUTES FIRE RESISTANT CONSTRUCTION / ENCLOSURE
--	--

03	Update of Balustrade Type as instructed	CB	20 Jun 09	CP
02	Corridor given 30 min fire rating	CB	11 Jun 09	CP
01	Revised door and VP numbers, issued for construction	CB	12 May 09	CB
Mark	Revision	Drawn	Date	Checked

SCOTT BROWNRIFF

St Catherine's Court
 46-48 Portsmouth Road
 Guildford GU2 4DU
 T +44 (0)1483 58886
 F +44 (0)1483 57530
 W scottbrownrigg.com

Client's name
Willmott Dixon

Job title
St Bartholomew's School

Drawing title
**Evers
 First Floor Plan
 Wall Types (E)**

Scale
1 : 100 @ A1

Drawn
 mal

Checked
 mal

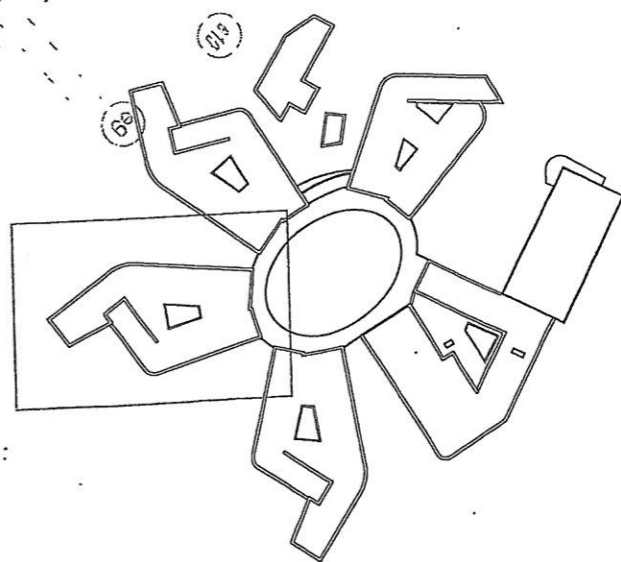
Date
 15Apr08

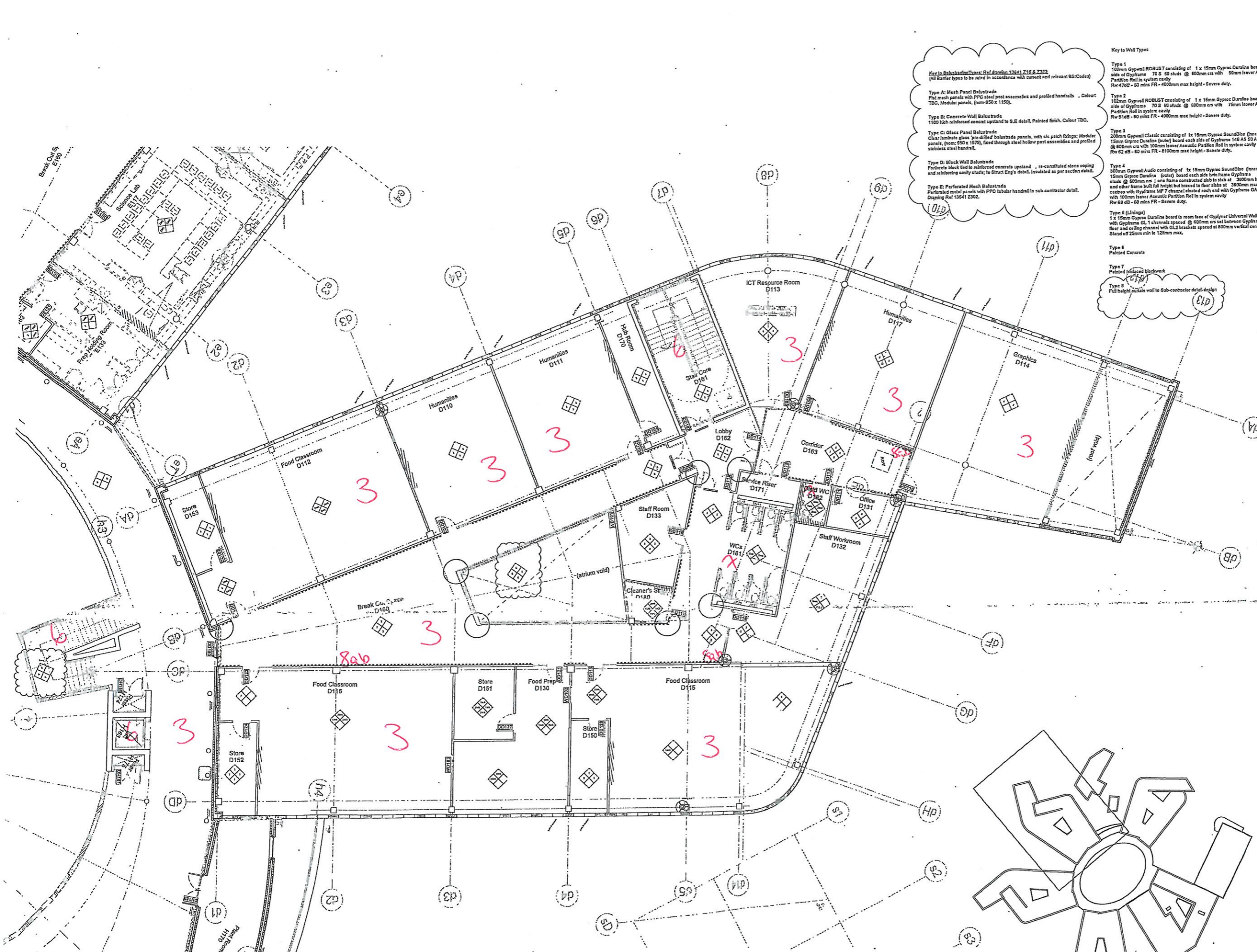
Job No
 13641

Drawing No
 SBR 13641 E 108

Rev
 03

Status
CONSTRUCTION





Key to Balustrade Types: Ref Drawing 13641 Z16 & Z32
 (All Barrier types to be rated in accordance with current and relevant BS/Codes)

Type A: Mesh Panel Balustrade
 Flat mesh panels with PPC steel post assemblies and profiled handrails. Colour TBC. Modular panels, (nom-950 x 1500).

Type B: Concrete Wall Balustrade
 1100 high reinforced concrete upstand to S.E detail. Painted finish. Colour TBC.

Type C: Glass Panel Balustrade
 Clear laminate glass pre-drilled balustrade panels, with six patch fittings. Modular panels, (nom: 950 x 1570). Fixed through steel hollow post assemblies and profiled stainless steel handrail.

Type D: Block Wall Balustrade
 Facerule block fixed to reinforced concrete upstand, re-constituted stone coping and reinforcing cavity shafts; to Struct Eng's detail. Insulated as per section detail.

Type E: Perforated Mesh Balustrade
 Perforated metal panels with PPC tubular handrail to sub-contractor detail. Drawing Ref 13641 Z302.

Key to Wall Types

Type 1
 102mm Gyproc ROUST consisting of 1 x 15mm Gyproc Duraline board each side of Gyproframe 70 S 60 studs @ 600mm c/s with 50mm Isover Acoustic Partition Roll in system cavity.
 Rw 47dB - 50 mins FR - 4000mm max height - Severe duty.

Type 2
 102mm Gyproc ROUST consisting of 1 x 15mm Gyproc Duraline board each side of Gyproframe 70 S 60 studs @ 600mm c/s with 75mm Isover Acoustic Partition Roll in system cavity.
 Rw 51dB - 60 mins FR - 4000mm max height - Severe duty.

Type 3
 208mm Gyproc Classic consisting of 1x 15mm Gyproc SoundBloc (inner) and 1x 15mm Gyproc Duraline (outer) board each side of Gyproframe 146 AS 50 Acoustuds @ 600mm c/s with 100mm Isover Acoustic Partition Roll in system cavity.
 Rw 62 dB - 60 mins FR - 4100mm max height - Severe duty.

Type 4
 300mm Gyproc Audio consisting of 1x 15mm Gyproc SoundBloc (inner) and 1x 15mm Gyproc Duraline (outer) board each side between Gyproframe 92 S 10 studs @ 600mm c/s; one frame constructed slab to slab at 3600mm high max and other frame built full height but braced to floor slabs at 3600mm max vertical centres with Gyproframe MFT channel cladded each end with Gyproframe GA 3 angle with 100mm Isover Acoustic Partition Roll in system cavity.
 Rw 69 dB - 60 mins FR - Severe duty.

Type 5 (Linings)
 1 x 15mm Gyproc Duraline board to room face of Gyproframe Universal Wall Lining with Gyproframe GL 1 brackets spaced @ 620mm c/s sat between Gyproframe GL 8 floor and ceiling channel with GL2 brackets spaced at 800mm vertical centres. Stand off 25mm min to 125mm max.

Type 6 Painted Concrete

Type 7 Painted reinforced blockwork

Type 8 Full height curtain wall to sub-contractor detail design

© Scott Brownrigg Ltd

Figured dimensions only are to be taken from this drawing. All dimensions are to be checked on site before any work is put in hand.

General Notes:
 *a: denotes where plasterboard will be used on single side of gyproframe.
 *b: denotes midline resistant variant of outer board of respective face.
 Partition systems to include deflection heads to accommodate + / - 20mm. 18mm plywood fixing grounds on Gyproframe Service Support Plates where required.

All exposed drying junctions in door sets to be protected by Gyproc edge bead.

Gradius Armfast 3.5mm(7) x 150mm(9) PVC-U Medium duty wall protection. Adhesive fixed @ 800mm CL. PFL Colour TBC.

Gradius Flex - Angle Corner Guard (2.1m). Adhesive fixed. Colour TBC

Area of wall to receive gyproframe 95FC50 reinforcement Ref SBR-Z357 Detail 14*15 @ heights TBC

All columns to be painted concrete, all exposed concrete finishes to S1E specification

Area to receive 2x 12.5mm plasterboard boxing around pipe, pipe to be lined with 25mm Isover Stand off 25mm min to 125mm max.

Ref Drawing 13641 Z 323 & 13641 Z324

Internal Fire Walls - Legend

30 MINUTES FIRE RESISTANT CONSTRUCTION / ENCLOSURE	30 MINUTES FIRE RESISTANT CONSTRUCTION / ENCLOSURE
--	--

03	Update of Balustrade Type as instructed	CB	20 Jul 09	CP
02	Corridor given 30 min fire rating	CB	11 Jun 09	CP
01	Revised door and VP numbers, issued for construction	cp	12 May 09	CB
Mark	Revision	Drawn	Date	Checked

SCOTT BROWNRIGG

St Catherine's Court
 46-48 Portsmouth Road
 Guildford GU2 4DU
 T +44 (0)1483 568886
 F +44 (0)1483 575830
 W scottbrownrigg.com

Client's name
Willmott Dixon

Job title
St Bartholomew's School

Drawing title
**Davis
 First Floor Plan
 Wall Types (D)**

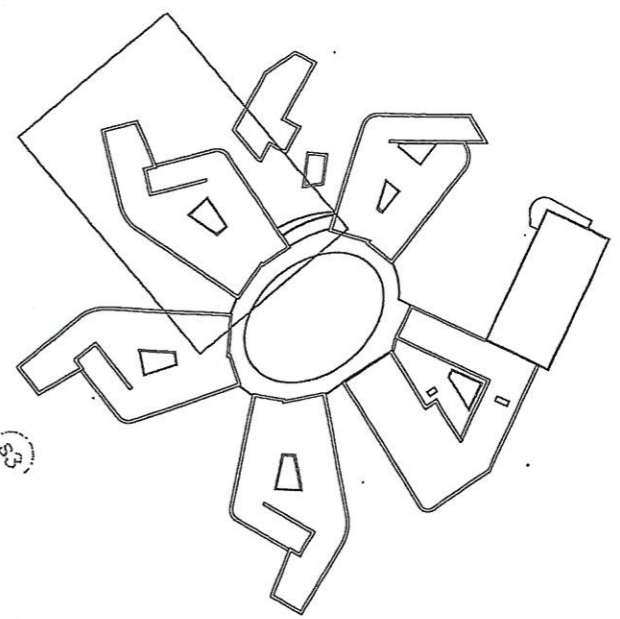
Scale
1 : 100 @ A1

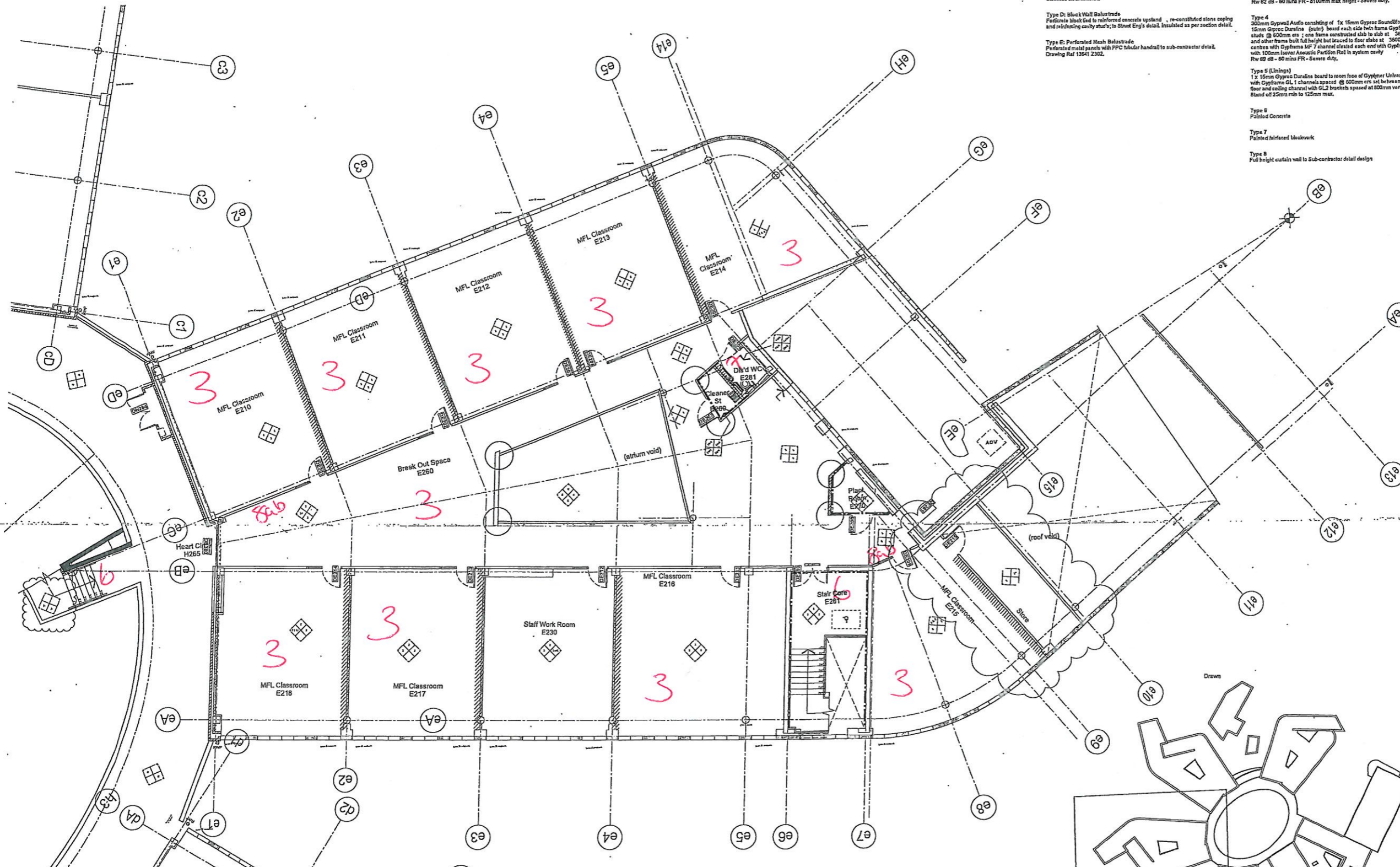
metres

Drawn	mal	Checked	mal	Date	15Apr08
-------	-----	---------	-----	------	---------

Job No	13641	Drawing No	SBR 13641 D 108	Rev	03
--------	-------	------------	-----------------	-----	----

Status
CONSTRUCTION





Key to Balustrade Types: Ref drawing 13641 Z18 & Z32
(All Balustrade types to be noted in accordance with current and relevant BS Codes)

Type A: Mesh Panel Balustrade
Flat mesh panels with PPC steel post assemblies and profiled handrails. Colour: TBC, Modular panels, (nom-950 x 1150).

Type B: Concrete Wall Balustrade
1100 high reinforced concrete upstand to S.E detail, Painted finish, Colour TBC.

Type C: Glass Panel Balustrade
Clear laminate glass 'pre-filled' balustrade panels, with s/s patch fittings; Modular panels, (nom-950 x 1150), fixed through steel hollow post assemblies and profiled stainless steel handrail.

Type D: Block Wall Balustrade
Furniture block tied to reinforced concrete upstand, re-constituted stone coping and reinforcing cavity studs; to Strut Eng's detail, insulated as per section detail.

Type E: Perforated Mesh Balustrade
Perforated metal panels with PPC modular handrail to sub-contractor detail, Drawing Ref 13641 Z302.

Key to Wall Types

Type 1
102mm Gyproc ROBUST consisting of 1 x 15mm Gyproc Duraline board each side of Gyproframe 70 S 60 studs @ 600mm c/s with 50mm Isover Acoustic Partition Roll in system cavity
Rw 47dB - 60 mins FR - 4000mm max height - Severe duty.

Type 2
102mm Gyproc ROBUST consisting of 1 x 15mm Gyproc Duraline board each side of Gyproframe 70 S 60 studs @ 600mm c/s with 75mm Isover Acoustic Partition Roll in system cavity
Rw 51dB - 60 mins FR - 4000mm max height - Severe duty.

Type 3
200mm Gyproc Classic consisting of 1x 15mm Gyproc SoundBloc (over) and 1x 15mm Gyproc Duraline (over) board each side of Gyproframe 146 AS 50 Acoustubs @ 600mm c/s with 100mm Isover Acoustic Partition Roll in system cavity
Rw 62 dB - 60 mins FR - 8100mm max height - Severe duty.

Type 4
300mm Gyproc Audio consisting of 1x 15mm Gyproc SoundBloc (over) and 1x 15mm Gyproc Duraline (over) board each side of Gyproframe 92 S 10 studs @ 600mm c/s; one frame constructed slab to slab at 3600mm high max and other frame built full height but braced to floor slabs at 3600mm max vertical centre with Gyproframe 147 7 channel created each end with Gyproframe GA 3 angle with 100mm Isover Acoustic Partition Roll in system cavity
Rw 62 dB - 60 mins FR - Severe duty.

Type 5 (Linings)
1x 15mm Gyproc Duraline board to room face of Gyproframe Universal Wall Lining with Gyproframe GL 1 channels spaced @ 600mm c/s set between Gyproframe GL 8 floor and ceiling channel with GL2 brackets spaced at 600mm vertical centres. Band of 25mm min to 125mm max.

Type 6
Painted Concrete

Type 7
Painted fairfaced blockwork

Type 8
Full height curtain wall to sub-contractor detail design

© Scott Brownrigg Ltd

Figured dimensions only are to be taken from this drawing. All dimensions are to be checked on site before any work is put in hand.

General Notes:
"a" denotes where plasterboard will be used on single side of gyproframe
"MR" denotes moisture resistant variant of outer board of respective face.
Partition systems to include deflection heads to accommodate +1/-25mm, 15mm plywood fixing grounds on Gyproframe Services Support Plates, where required.

All exposed drying junctions to door sets to be protected by Gyproc edge bead.

Grades Armated 3.5mm(7) x 150mm(9) PVC-U Medium duty wall protection. Adhesive fixed @ 800mm CL. PFL Colour TBC.

Grades Flexi - Angle Corner Guard (2.1m). Adhesive fixed. Colour TBC

Area to receive gyproframe 99FC50 reinforcement Ref SBR-2357 Detail 14+15 @ heights TBC

All columns to be painted concrete, all exposed concrete finishes to S/E specification

Area to receive 2 x 15mm Duraline boxing around pipe, pipe to be fixed with 25mm Isovol Ref Drawing 13641 Z 323 & 13641 Z324

Internal Fire Walls: Legend

30 MINUTES FIRE RESISTANT CONSTRUCTION / ENCLOSURE	---
--	-----

03	Revised in accordance with CAI 24.4	CB	15Mar10	JG
02	Update of Balustrade Type as instructed	CB	20Jul09	CP
01	Revised door and VP numbers, issued for construction.	CP	12Mar09	CB
Mark	Revision		Date	Checked

SCOTT BROWNRIGG

St Catherine's Court
46-48 Portsmouth Road
Guildford GU2 4DJ
T +44 (0)1483 56866
F +44 (0)1483 575830
W scottbrownrigg.com

Client's name
Willmott Dixon

Job title
St Bartholomew's School

Drawing title
**Evers
Second Floor Plan
Wall Types (E)**

Scale
1 : 100 @ A1

metres	0	5	10
Drawn	mal	Checked	mal
Date		Date	15Apr08

Job No	Drawing No	Rev
13641	SBR 13641 E 109	03

Status
CONSTRUCTION



© Scott Brownrigg Ltd
 Figures dimensions are to be taken from this drawing. All dimensions are to be checked on site before any work is put in hand.

General Notes:
 - All dimensions are to be taken from the centre of the wall unless otherwise stated.
 - All dimensions are to be taken from the centre of the wall unless otherwise stated.
 - All dimensions are to be taken from the centre of the wall unless otherwise stated.
 - All dimensions are to be taken from the centre of the wall unless otherwise stated.

1	150mm Open Ductwork
2	150mm Open Ductwork
3	150mm Open Ductwork
4	150mm Open Ductwork
5	150mm Open Ductwork
6	150mm Open Ductwork

Key to Wall Types

Type 1
 150mm Open Ductwork consisting of 1 x 150mm Open Ductwork board with side of Ductwork 75 x 25mm @ 800mm centres. 150mm lower finish. Finish: Red in system cavity. Max height 4000mm max height - 2000mm max.

Type 2
 150mm Open Ductwork consisting of 1 x 150mm Open Ductwork board with side of Ductwork 75 x 25mm @ 800mm centres. 150mm lower finish. Finish: Red in system cavity. Max height 4000mm max height - 2000mm max.

Type 3
 150mm Open Ductwork consisting of 1 x 150mm Open Ductwork board with side of Ductwork 75 x 25mm @ 800mm centres. 150mm lower finish. Finish: Red in system cavity. Max height 4000mm max height - 2000mm max.

Type 4
 150mm Open Ductwork consisting of 1 x 150mm Open Ductwork board with side of Ductwork 75 x 25mm @ 800mm centres. 150mm lower finish. Finish: Red in system cavity. Max height 4000mm max height - 2000mm max.

Type 5
 150mm Open Ductwork consisting of 1 x 150mm Open Ductwork board with side of Ductwork 75 x 25mm @ 800mm centres. 150mm lower finish. Finish: Red in system cavity. Max height 4000mm max height - 2000mm max.

Type 6
 150mm Open Ductwork consisting of 1 x 150mm Open Ductwork board with side of Ductwork 75 x 25mm @ 800mm centres. 150mm lower finish. Finish: Red in system cavity. Max height 4000mm max height - 2000mm max.

Type 7
 150mm Open Ductwork consisting of 1 x 150mm Open Ductwork board with side of Ductwork 75 x 25mm @ 800mm centres. 150mm lower finish. Finish: Red in system cavity. Max height 4000mm max height - 2000mm max.

Type 8
 150mm Open Ductwork consisting of 1 x 150mm Open Ductwork board with side of Ductwork 75 x 25mm @ 800mm centres. 150mm lower finish. Finish: Red in system cavity. Max height 4000mm max height - 2000mm max.

Type 9
 150mm Open Ductwork consisting of 1 x 150mm Open Ductwork board with side of Ductwork 75 x 25mm @ 800mm centres. 150mm lower finish. Finish: Red in system cavity. Max height 4000mm max height - 2000mm max.

Type 10
 150mm Open Ductwork consisting of 1 x 150mm Open Ductwork board with side of Ductwork 75 x 25mm @ 800mm centres. 150mm lower finish. Finish: Red in system cavity. Max height 4000mm max height - 2000mm max.

03	Sheet 03 of 10	A2	17/05/08
02	Sheet 02 of 10	A2	14/05/08
01	Sheet 01 of 10	A2	12/05/08

SCOTT BROWNRIFF

81 Catherine's Court
 48-50 Parkborough Road
 Gulliford GU2 4DU
 T +44 (0)1483 566610
 F +44 (0)1483 275130
 W scottbrownrigg.com

Client name
 Willmott Dixon

Job site
 St Bartholomew's School

Drawing title
 Patterson
 First Floor Plan
 Wall Types (P)

Scale
 1 : 100 @ A0

Drawn
 mal
 13 May 08

Job No
 13641 SBR 13641 P 108 03

Issue
 CONSTRUCTION

(1/1)

Key to Balustrade Types: Ref drawing 13641 Z16 & Z322
(All Barrier types to be rated in accordance with current and relevant BS/Codes)

Type A: Mesh Panel Balustrade
Flat mesh panels with PPC steel post assemblies and profiled handrails. Colour: TBC. Modular panels, (nom-950 x 1150).

Type B: Concrete Wall Balustrade
1100 high reinforced concrete upstand to S.E detail. Painted finish. Colour TBC.

Type C: Glass Panel Balustrade
Clear laminated glass 'eye-bolt' balustrade panels, with safe patch fittings; Modular panels, (nom: 950 x 1575), fixed through steel hollow post assemblies and profiled stainless steel handrail.

Type D: Black Wall Balustrade
Fonstrate block fixed to reinforced concrete upstand, re-constituted stone coping and reinforcing cavity stud; to Struct Eng's detail. Insulated as per section detail.

Type E: Perforated Mesh Balustrade
Perforated metal panels with PPC tubular handrail to sub-contractor detail. Drawing Ref 13641 Z302.

Key to Wall Types

Type 1
102mm Gyproc ROBUST consisting of 1 x 15mm Gyproc Duraflor board each side of Gyproframe 70 S 60 studs @ 600mm c/s with 50mm Isover Acoustic Partition Roll in system cavity. Rv 47dB - 60 mins FR - 4000mm max height - Severe duty.

Type 2
102mm Gyproc ROBUST consisting of 1 x 15mm Gyproc Duraflor board each side of Gyproframe 70 S 60 studs @ 600mm c/s with 75mm Isover Acoustic Partition Roll in system cavity. Rv 51dB - 60 mins FR - 4000mm max height - Severe duty.

Type 3
208mm Gyproc Classic consisting of 1x 15mm Gyproc SoundBloc (Gms) and 1x 15mm Gyproc Duraflor (Gms) board each side of Gyproframe 146 AS 50 Acoustude @ 600mm c/s with 100mm Isover Acoustic Partition Roll in system cavity. Rv 62 dB - 60 mins FR - 6100mm max height - Severe duty.

Type 4
300mm Gyproc Auda consisting of 1x 15mm Gyproc SoundBloc (Gms) and 1x 15mm Gyproc Duraflor (Gms) board each side with Gyproframe 92 S 10 studs @ 900mm c/s; one frame constructed slab to slab at 3800mm high max and other frame built full height but braced to floor slabs at 3800mm max vertical extent with Gyproframe MF 7 channel attached each end with Gyproframe GA 3 angle with 100mm Isover Acoustic Partition Roll in system cavity. Rv 69 dB - 60 mins FR - Severe duty.

Type 5 (Linings)
1x 15mm Gyproc Duraflor board to rear face of Gyproframe Universal Wall Lining with Gyproframe GL 1 channels spaced @ 600mm c/s set between Gyproframe GL 8 floor and ceiling channel with GL2 brackets spaced at 800mm vertical centres. Stand off 25mm min to 125mm max.

Type 6
Painted Concrete

Type 7
Painted fairfaced blockwork

Type 8
Full height curtain wall to sub-contractor detail design

© Scott Brownrigg Ltd

Figured dimensions only are to be taken from this drawing. All dimensions are to be checked on site before any work is put in hand.

General Notes:
"x" denotes where plasterboard will be used on single side of gyproframe
"MFC" denotes moisture resistant variant of outer board of respective data.
Partition systems to include deflection heads to accommodate +/- 20mm, 18mm plywood fixing grounds on Gyproframe Service Support Plates where required.

All exposed drying joints to door sets to be protected by Gyproc edge bead.

On Stud Armoured 3.0mm (7) x 150mm (4) PVC-co Medium duty wall protection. Adhesive fixed @ 400mm CL. FFL Colour TBC.

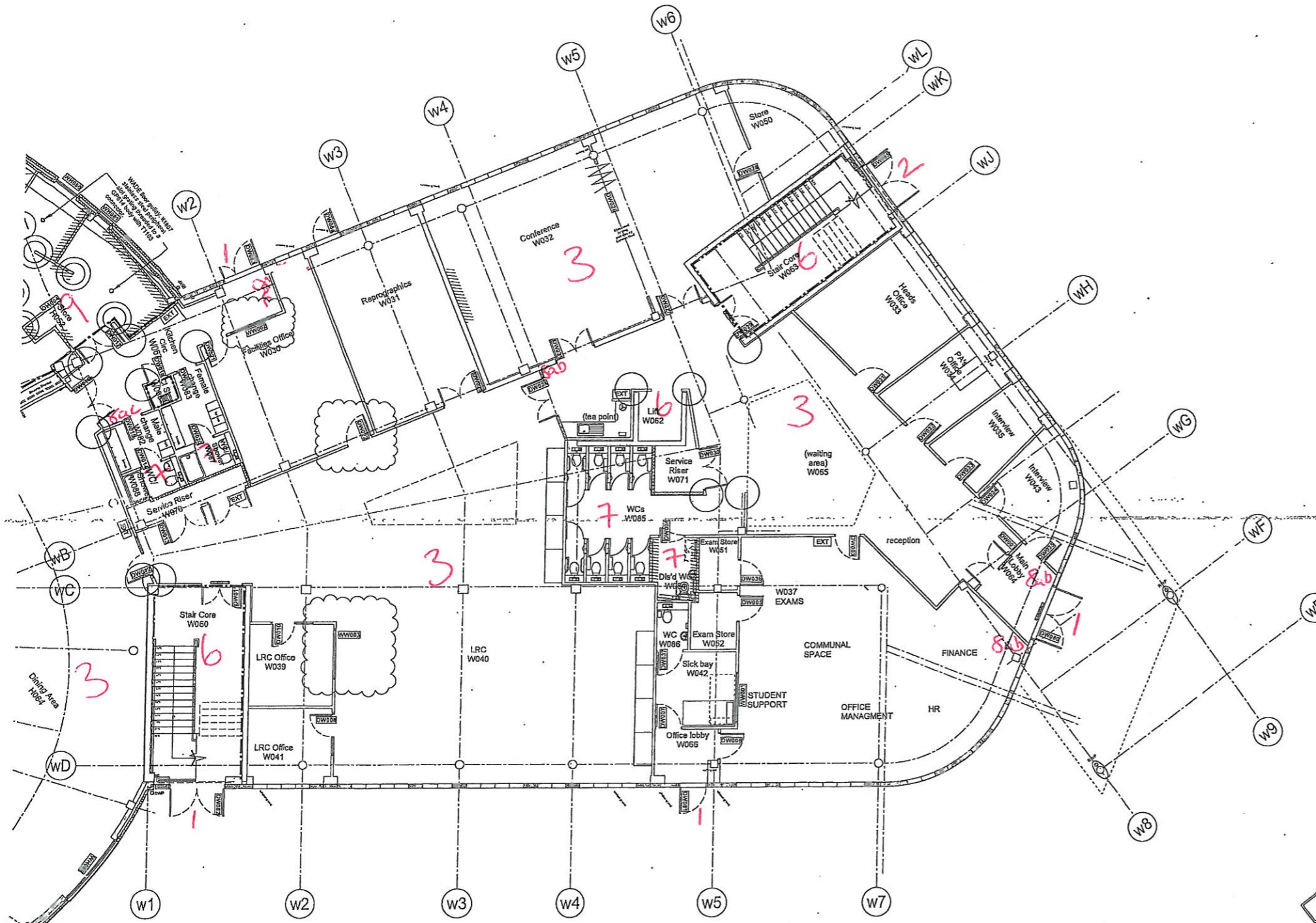
Gradus Flex - Angle Corner Guard (2.1m). Adhesive fixed. Colour TBC

Area of wall to receive gyproframe 95FC50 reinforcement Ref SBR-Z337 Detail 14+15 @ heights TBC

All columns to be painted concrete, all exposed concrete finishes to S/E specification

Area to receive 2 x 15mm Duraflor boxing around pipe, pipe to be lined with 25mm Isovol Ref Drawing 13641 Z 923 & 13641 Z324

Internal Fire Walls: Legend			
	30 MINUTES FIRE RESISTANT CONSTRUCTION / ENCLOSURE		



Mark	Revision	Description	CP	Date	Checked
05	Revised in accordance with CAI 19 CB		04Mar10	JG	
04	Update of Balustrade types as instructed		24Jul09	CP	
03	Revised VP reference		22Jun09	CB	
02	Plasterboard finish to headmaster's office		18Jun09	CP	
01	Revised door and VP numbers, issued for construction		12Mar08	CS	

SCOTT BROWNRIFF

St Catherine's Court
4C-48 Portsmouth Road
Guildford GU2 4DU
T +44 (0)1483 568686
F +44 (0)1483 575830
W scottbrownrigg.com

Client's name
Willmott Dixon

Job title
St Bartholomew's School

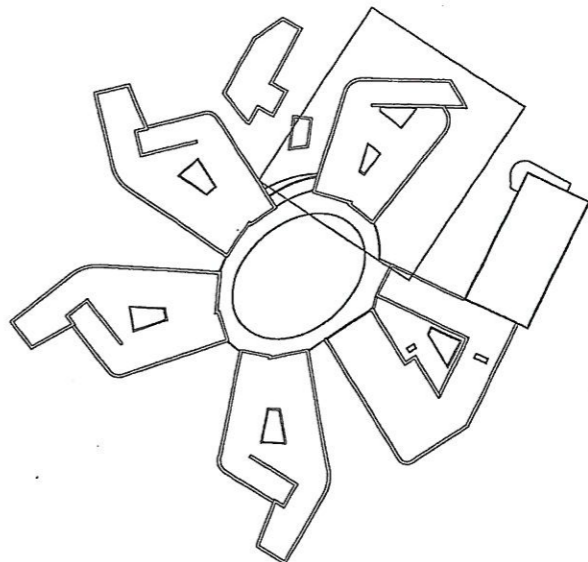
Drawing title
**Wormestall
Ground Floor Plan
Wall Types (W)**

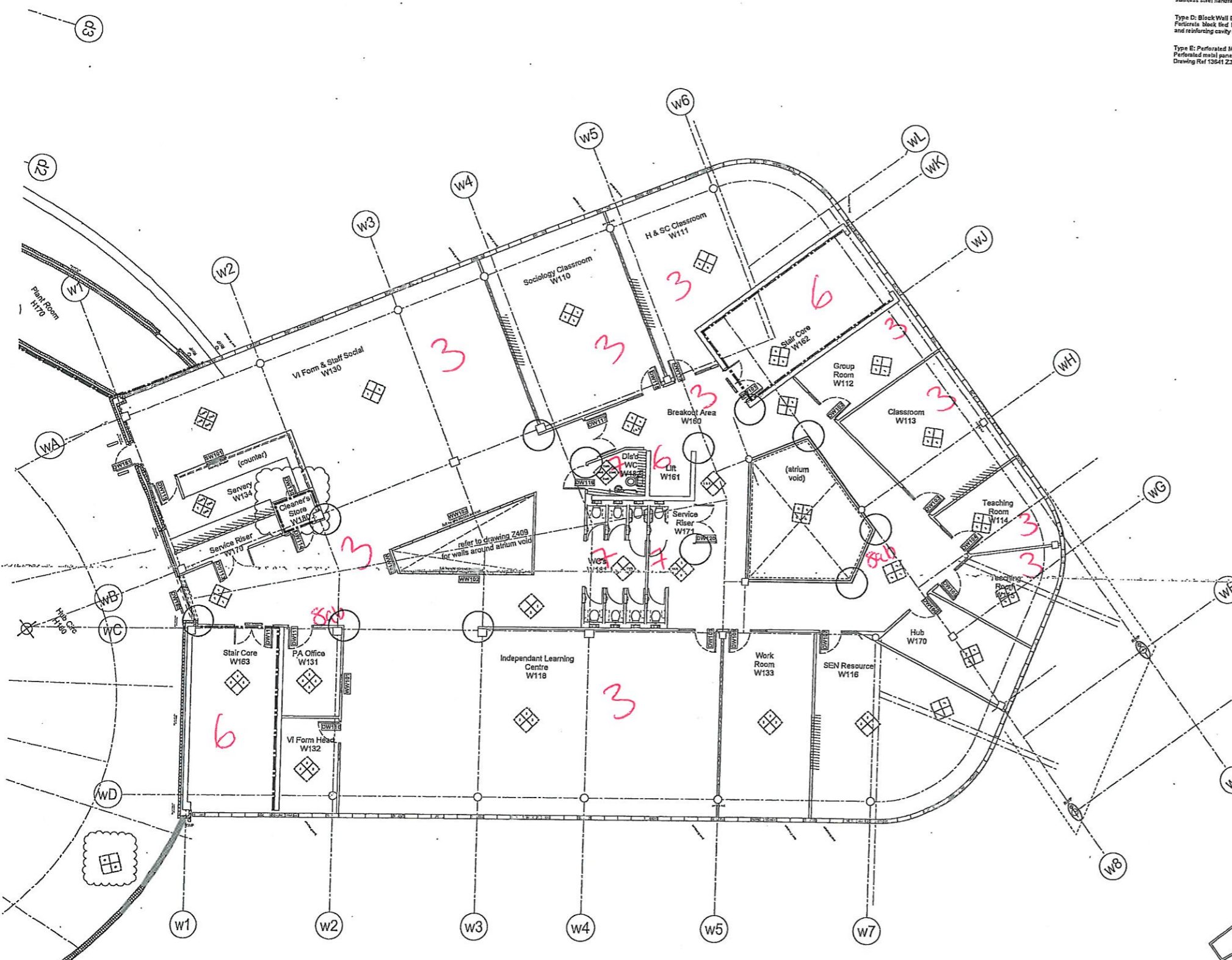
Scale
1 : 100 @ A1

Drawn: mal, Checked: mal, Date: 15Apr08

Job No: 13641, Drawing No: SBR 13641 W 107, Rev: 05

Status
CONSTRUCTION





Key to Balustrade Types: Ref Drawing 13641 Z18 & Z32
(All Balustrade types to be noted in accordance with current and relevant BS:Codes)

Type A: Mesh Panel Balustrade
Flat mesh panels with PPC steel post assemblies and profiled handrails. Colour: TBC. Modular panels, (nom-950 x 1150).

Type B: Concrete Wall Balustrade
1100 high reinforced concrete upstand to S/E detail. Painted finish. Colour TBC.

Type C: Glass Panel Balustrade
Clear laminate glass pre-drilled balustrade panels, with site patch fittings. Modular panels, (nom: 950 x 1575), fixed through steel hollow post assemblies and profiled stainless steel handrail.

Type D: Block Wall Balustrade
Fortiflex block fixed to reinforced concrete upstand, re-constituted stone coping and reinforcing cavity studs, to Struct Eng's detail. Insulated as per section detail.

Type E: Perforated Mesh Balustrade
Perforated metal panels with PPC tubular handrail to sub-contractor detail, Drawing Ref 13641 Z302.

Key to Wall Types

Type 1
102mm Gyprocwall ROBUST consisting of 1 x 15mm Gyproc Duraline board each side of Gyproc 70 @ 60 studs @ 600mm c/s with 50mm Isover Acoustic Partition Roll in system cavity.
Rv 47dB - 60 mins FR - 4000mm max height - Severe duty.

Type 2
102mm Gyprocwall ROBUST consisting of 1 x 15mm Gyproc Duraline board each side of Gyproc 70 @ 60 studs @ 600mm c/s with 75mm Isover Acoustic Partition Roll in system cavity.
Rv 51dB - 60 mins FR - 4000mm max height - Severe duty.

Type 3
200mm Gyproc Classic consisting of 1x 15mm Gyproc SoundBloc (over) and 1x 15mm Gyproc Duraline (under) board each side of Gyproc 148 AS 50 Acoustabs @ 600mm c/s with 100mm Isover Acoustic Partition Roll in system cavity.
Rv 62 dB - 60 mins FR - 4000mm max height - Severe duty.

Type 4
300mm Gyprocw Audi consisting of 1x 15mm Gyproc SoundBloc (over) and 1x 15mm Gyproc Duraline (under) board each side with Gyproc 102 @ 10 studs @ 600mm c/s; one frame constructed slab to slab at 3600mm high max and other frame built full height but braced to floor slabs at 3600mm max vertical centres with Gyproc MF7 channel cleated each end with Gyproc GA3 angle with 100mm Isover Acoustic Partition Roll in system cavity.
Rv 62 dB - 60 mins FR - Severe duty.

Type 5 (Lining)
1 x 15mm Gyproc Duraline board to room face of Gyproc Universal Wall Lining with Gyproc GL1 channels spaced @ 600mm c/s set between Gyproc GLB floor and ceiling channel with GL2 brackets spaced at 600mm vertical centres. Stand off 25mm min to 125mm max.

Type 6
Painted Concrete

Type 7
Painted fairfaced blockwork

Type 8
Full height curtain wall to Sub-contractor detail design

© Scott Brownrigg Ltd

Figured dimensions only are to be taken from this drawing. All dimensions are to be checked on site before any work is put in hand.

General Notes:
* denotes where plasterboard will be used on single side of gyproc
** denotes where resilient variant of outer board of respective area.
Partition systems to include deflection heads to accommodate +/- 20mm.
18mm plywood fixing grounds on Gyproc Service Support Plates, where required.

All exposed drying junctions in door sets to be protected by Gyproc edge bead.

Grades Annular 3.5mm(T) x 150mm(D) PVC-u Medium duty wall protection.
Adhesive fixed @ 400mm CL FFL Colour TBC.

○ Grados Flexi - Angle Corner Guard (2.1m). Adhesive fixed. Colour TBC

Area of wall to receive gyproc 99FC50 reinforcement Ref SBR-Z357 Detail 14+15 @ heights TBC

All columns to be painted concrete, all exposed concrete finishes to S/E specification

○ Area to receive 2x 12.5mm plasterboard boxing around pipe, pipe to be lined with 25mm Isovol Ref Drawing 13641 Z 323 & 13641 Z324

Internal Fix Walls - Legend

30 MINUTES FIRE RESISTANT CONSTRUCTION/ENCLOSURE

04	Add Clr Cpd Door	JG	20Oct09	JG
03	Update of Balustrade types as instructed	CB	24Jul09	CP
02	Revised VP reference	CP	22Jun09	CB
01	Revised door and VP numbers, issued for construction	CP	12May09	CB
Mark	Revision	Draw	Date	Checked

SCOTT BROWNRIFF

St Catherine's Court
45-48 Portsmouth Road
Guildford GU2 4DU
T +44 (0)1483 568686
F +44 (0)1483 575830
W scottbrownrigg.com

Client's name
Willmott Dixon

Job title
St Bartholomew's School

Drawing title
Wormestall
First Floor Plan
Wall Types (W)

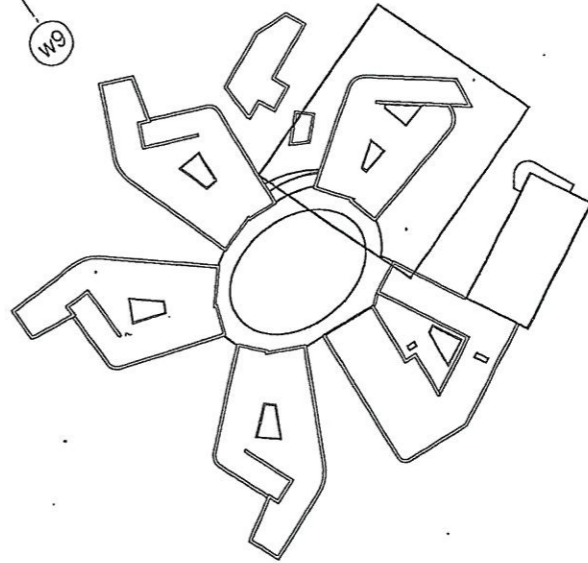
Scale
1 : 100 @ A1

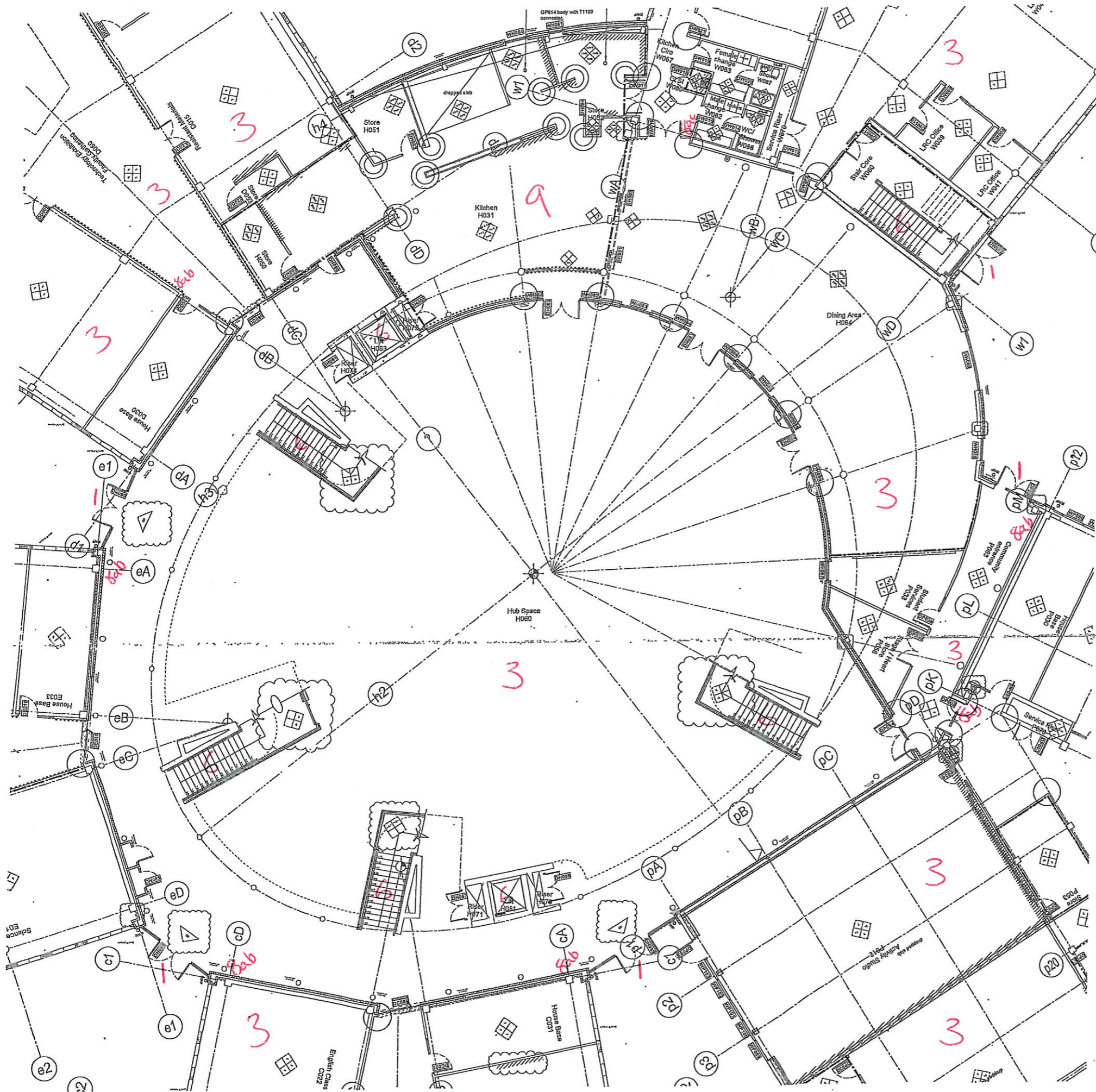
metres 0 5 10

Drawn mal Checked mal Date 15Apr08

Job No 13641 Drawing No SBR 13641 W 108 Rev 04

Status
CONSTRUCTION





Key to Wall Types

Type 1
102mm Gyproc ROBUST consisting of 1 x 15mm Gyproc Duraline board each side of Gyproc 70 S 60 studs @ 600mm c/s with 50mm Isover Acoustic Partition Roll in system cavity
Rv 47dB - 50 mins FR - 400mm max height - Severe duty.

Type 2
125mm Gyproc ROBUST consisting of 1 x 15mm Gyproc Duraline board each side of Gyproc 70 S 60 studs @ 600mm c/s with 75mm Isover Acoustic Partition Roll in system cavity
Rv 51dB - 60 mins FR - 400mm max height - Severe duty.

Type 3
202mm Gyproc Classic consisting of 1 x 15mm Gyproc SoundBloc (new) and 1 x 15mm Gyproc Duraline (new) board each side of Gyproc 148 AS 50 Acoustics @ 600mm c/s with 100mm Isover Acoustic Partition Roll in system cavity
Rv 62 dB - 60 mins FR - 810mm max height - Severe duty.

Type 4
300mm Gyproc Acoustic consisting of 1 x 15mm Gyproc SoundBloc (new) and 1 x 15mm Gyproc Duraline (new) board each side with Gyproc 32 S 10 studs @ 600mm c/s; one frame constructed slab to slab at 3500mm high max and other frame built full height but braced to floor slabs at 3400mm max vertical centres with Gyproc MUF channels spaced each end with Gyproc GA 3 angle with 100mm Isover Acoustic Partition Roll in system cavity
Rv 69 dB - 60 mins FR - Severe duty.

Type 5 (Lining)
1 x 15mm Gyproc Duraline board to room face of Gyproc Universal Wall Lining with Gyproc GL 1 channels spaced @ 600mm c/s set between Gyproc GL 8 floor anchoring channels with GL2 brackets spaced at 600mm vertical centres
Stand off 25mm min to 25mm max.

Type 6
Painted Concrete

Type 7
Painted fairfaced blockwork

Type 8
Full height curtain wall to sub-contractor detail design

General Notes:
- All details where plasterboard will be used on single side of gyproc 70S details moisture resistant variant of outer board of respective face.
- Partition systems to include deflection heads to accommodate +/- 20mm.
- 18mm plywood fixing grounds on Gyproc Service Support Plates where required.

All exposed drying joints to door sets to be protected by Gyproc edge bead.

Concrete Armoured 3.5mm(T) x 150mm(H) PVCu Medium duty wall protection. Adhesive fixed @ 800mm CL FFL Colour TBC.

○ Gradus Fixal - Angle Corner Guard (2.1m). Adhesive fixed. Colour TBC

○ Area to receive gyproc 93FC50 reinforcement Ref SBR-2357 Detail 14+15 @ heights TBC

All columns to be painted concrete, all exposed concrete finishes to SFE specification

○ Area to receive 2x 12.5mm plasterboard boarding around pipes, pipe to be fixed with 25mm kno wool Ref Drawing 13641 Z 323 & 13641 Z324

Key to Balustrade Types: (Ref drawings 13641 Z16 & Z32)
(All Balustrade types to be noted in accordance with, current and relevant BS Codes)

Type A: Mesh Panel Balustrade
Flat mesh panels with PPC fixed post assemblies and profiled handrails. Colour TBC. Modular panels, (non-90 x 1150).

Type B: Concrete Wall Balustrade
1100 high reinforced concrete upstand to SFE detail. Painted finish, Colour TBC.

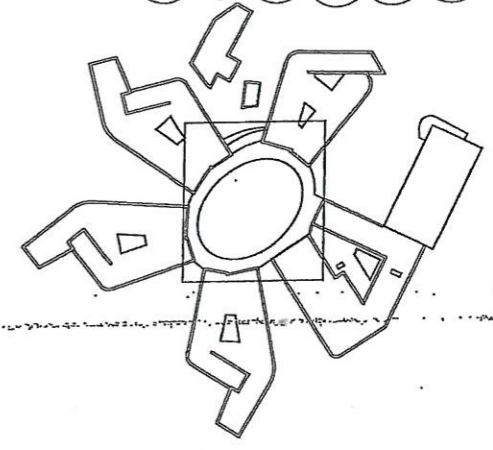
Type C: Glass Panel Balustrade
Clear laminated glass 'top-edge' balustrade panels, with slip patch fittings; Modular panels, (non-90 x 1570), fixed through steel hollow post assemblies and profiled stainless steel handrail.

Type D: Block Wall Balustrade
Porcelain block fixed to reinforced concrete upstand, re-constituted stone coping and reinforcing cavity stud to, to SFE Eng's detail. Insulated as per section detail.

Type E: Perforated Mesh Balustrade
Perforated metal panels with PPC tubular handrail to sub-contractor detail. Drawing Ref 13641 Z302.

Internal Fire Walls - Legend

20 MINUTES FIRE RESISTANT CONSTRUCTION ENCLOSURE	20 MINUTES
--	------------



02	Update of Balustrade types as instructed	CB	24 Jun 09	CP
01	Revised floor and VP numbers issued for construction	CP	12 May 09	CB
Mark	Revision	Drawn	Date	Checked

SCOTT BROWN RIGG

St Catherine's Court
46-48 Portsmouth Road
Guildford GU2 4DU
T +44 (0)1483 568585
F +44 (0)1483 575830
W scottbrownrigg.com

Client's name
Willmott Dixon

Job title
St Bartholomew's School

Drawing title
**Hub Space
Ground Floor Plan
Wall Types (H)**

Scale
1 : 100 @ A1

metres 0 5 10

Drawn	Checked	Date
ML	JG	13 May 08

Job No	Drawing No	Rev
13641	SBR 13641 H 107	02

Status
CONSTRUCTION